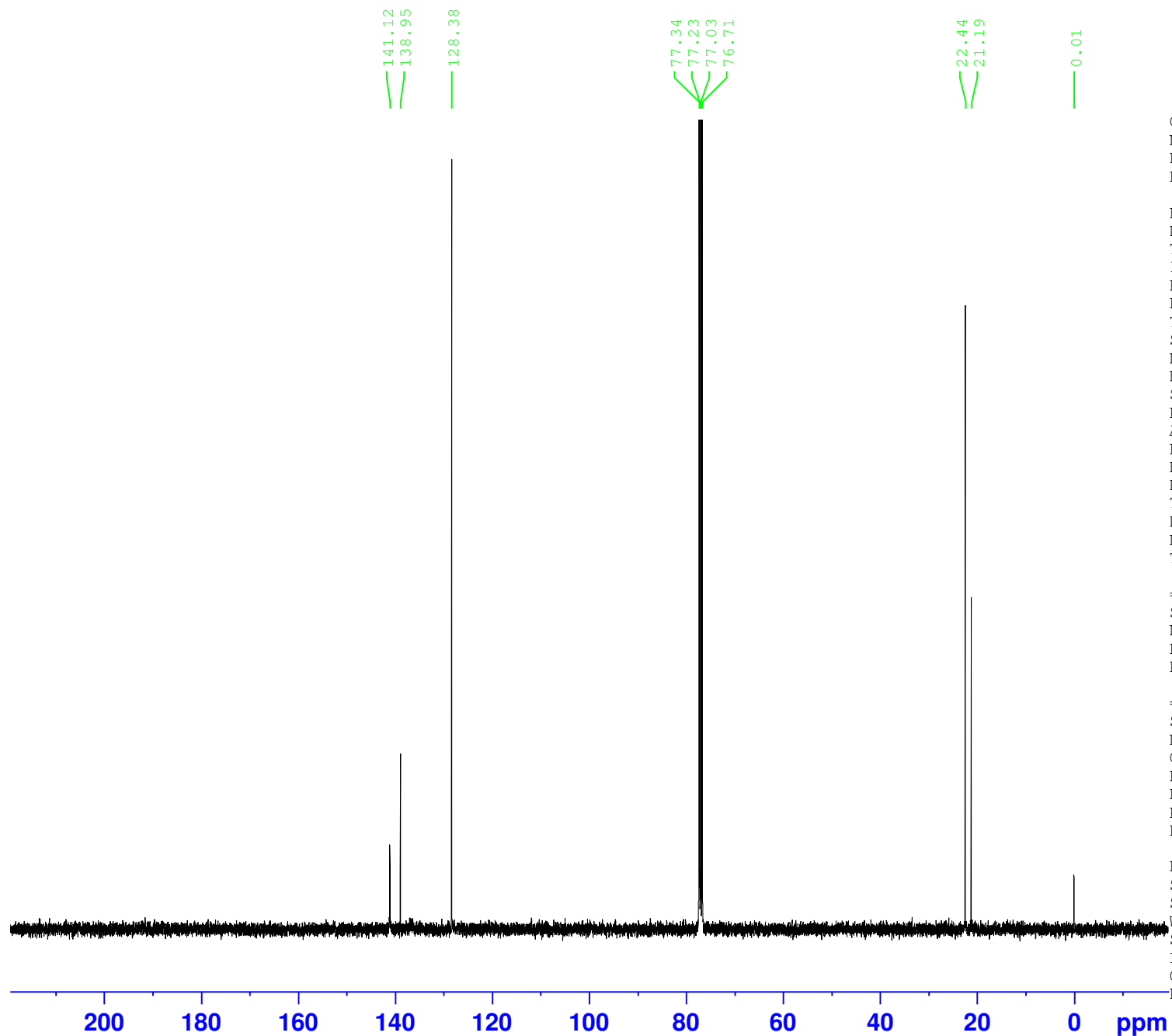


AW:SA:SA-Mes



A4

Current Data Parameters
NAME 20195832
EXPNO 11
PROCNO 1

F2 - Acquisition Parameters
Date_ 20150421
Time 3.10
INSTRUM spect
PROBHD 5 mm PABBO BB/
PULPROG zgpg30
TD 65536
SOLVENT CDC13
NS 1024
DS 0
SWH 24038.461 Hz
FIDRES 0.366798 Hz
AQ 1.3631488 sec
RG 197.36
DW 20.800 usec
DE 9.99 usec
TE 295.2 K
D1 2.00000000 sec
D11 0.03000000 sec
TD0 1

===== CHANNEL f1 =====
SFO1 100.6228293 MHz
NUC1 13C
P1 8.00 usec
PLW1 75.00000000 W

===== CHANNEL f2 =====
SFO2 400.1316005 MHz
NUC2 1H
CPDPRG[2] waltz16
PCPD2 90.00 usec
PLW2 27.20000076 W
PLW12 0.36320001 W
PLW13 0.29420000 W

F2 - Processing parameters
SI 32768
SF 100.6127690 MHz
WDW EM
SSB 0
LB 1.00 Hz
GB 0
PC 1.40