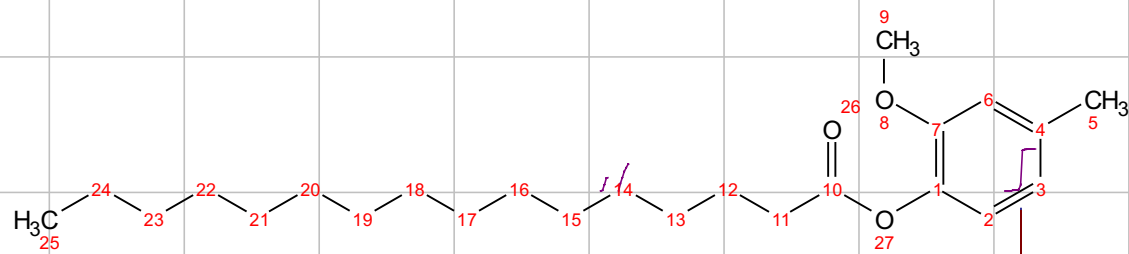


msf120

^1H NMR (400 MHz, CHLOROFORM- D) δ 7.26, 7.02, 6.81, 3.80



6.90
6.89
6.88
6.77
6.77
6.75
6.74
6.73
6.72

3.80
3.79

2.58
2.56
2.55
2.54
2.34
2.29
2.28
1.79
1.78
1.76
1.74
1.72
1.56
1.46
1.44
1.43
1.42
1.42
1.41
1.41
1.40
1.40
1.38
1.36
1.34
1.32
1.31
1.27
0.90
0.88
0.87

F (m) 6.75
E (d) 6.89
A (s) 3.80
B (t) 2.56
C (s) 2.34
D (p) 1.76
H (s) 1.27
G (m) 0.88
I (m) 1.42

0.95
1.92
3.00
1.97
3.05
1.99
4.07
20.37
3.06

12 11 10 9 8 7 6 5 4 3 2 1 0 -1 -2

f1 (ppm)

0.9
0.8
0.7
0.6
0.5
0.4
0.3
0.2
0.1
0.0