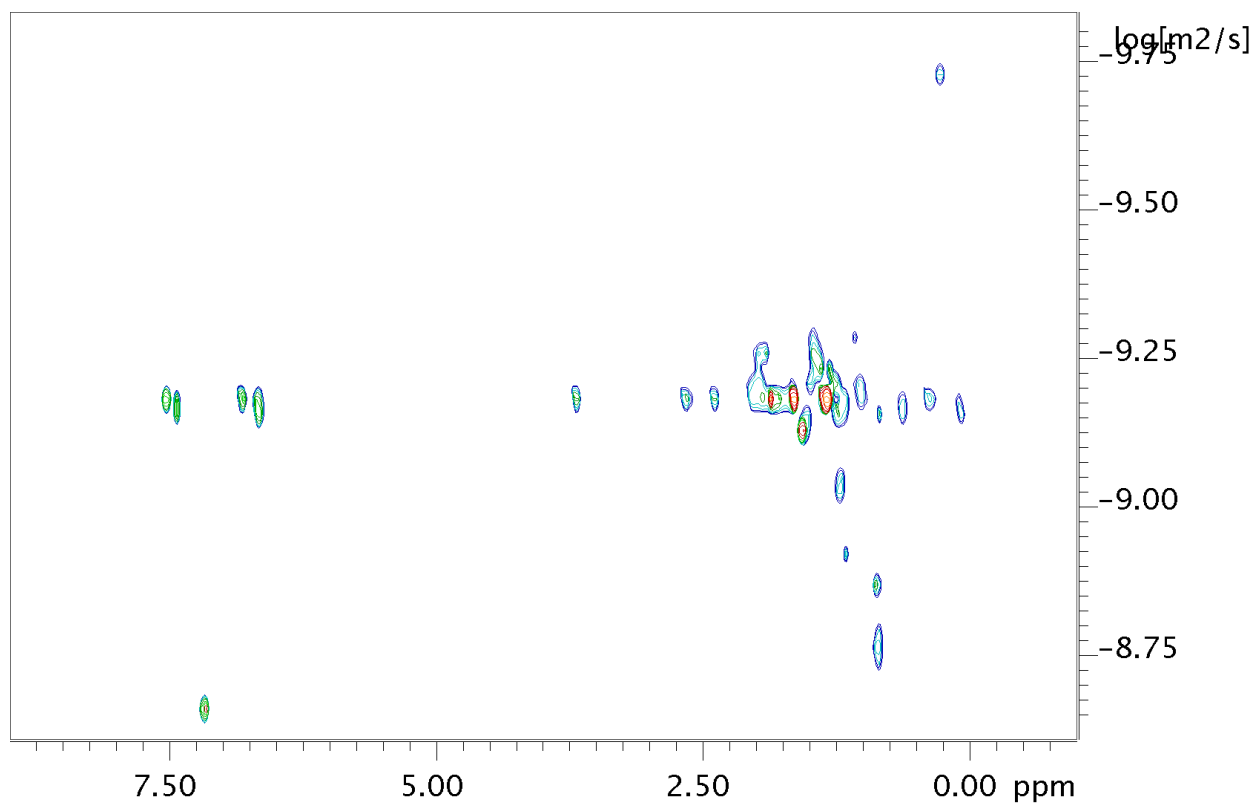
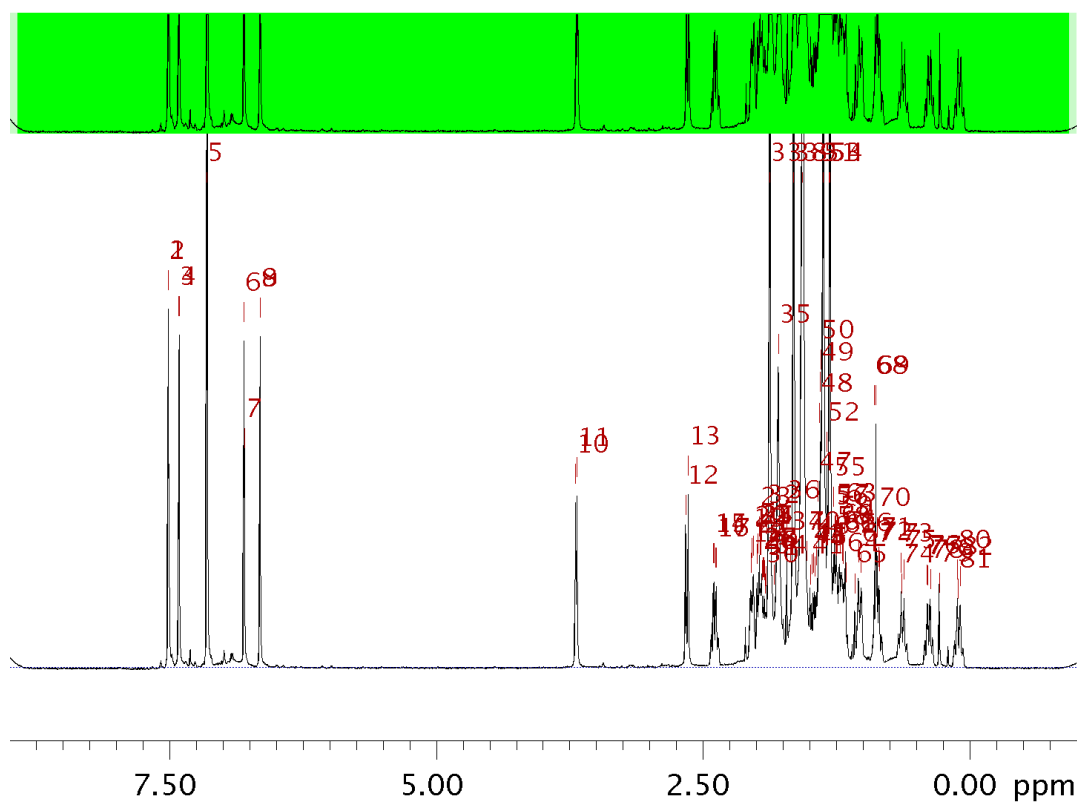


• Diffusion Analysis



sample name:	demosample
Description/Title:	standard demo sample
Origin:	in-house
Date of preparation:	06 / 2005
Lab Book Number:	000



Fitted function:	$f(x) = A * \exp(-D * x^2 * \gamma^2 * \text{littleDelta}^2 * (\text{bigDelta} - \text{littleDelta}/3) * 10^4)$
used gamma:	26752 rad/(s*Gauss)
used little delta:	0.0032000 s
used big delta:	0.039900 s
used gradient strength:	variable
Random error estimation of data:	RMS per spectrum (or trace/plane)
Systematic error estimation of data:	worst case per peak scenario
Fit parameter Error estimation method:	from Monte Carlo simulations
Confidence level:	95%
Used peaks:	
Used integrals:	peak intensities
Used Gradient strength:	all values (including replicates) used

Peak name	F2 [ppm]	D [m2/s]	error
1	7.516	6.67e-10	2.022e-12
2	7.513	6.71e-10	1.750e-12
3	7.416	6.74e-10	2.229e-12
4	7.411	6.81e-10	2.025e-12
5	7.151	2.18e-09	4.498e-12
6	6.805	6.76e-10	2.356e-12
7	6.802	6.76e-10	1.995e-12
8	6.656	6.76e-10	2.397e-12
9	6.652	6.79e-10	2.030e-12
10	3.696	6.73e-10	3.793e-12
11	3.683	6.72e-10	3.599e-12
12	2.664	6.63e-10	4.491e-12
13	2.640	6.62e-10	3.713e-12
14	2.407	6.65e-10	8.342e-12
15	2.399	6.67e-10	7.615e-12
16	2.384	6.63e-10	8.053e-12
17	2.375	6.76e-10	7.810e-12
18	2.053	6.56e-10	8.027e-12
19	2.043	6.49e-10	1.187e-11
20	2.030	6.31e-10	6.399e-12
21	1.995	5.63e-10	5.779e-12
22	1.988	5.92e-10	2.932e-11
23	1.973	6.03e-10	4.980e-12
24	1.964	6.46e-10	8.062e-12
25	1.958	6.40e-10	6.893e-12
26	1.950	6.45e-10	6.621e-12
27	1.942	6.37e-10	1.089e-11
28	1.935	6.18e-10	1.051e-11
29	1.927	5.66e-10	7.216e-12
30	1.918	5.50e-10	9.172e-12

Peak name	F2 [ppm]	D [m2/s]	error
31	1.913	5.38e-10	8.042e-12
32	1.906	5.65e-10	9.431e-12
33	1.877	6.71e-10	1.516e-13
34	1.834	6.58e-10	1.325e-11
35	1.796	6.61e-10	2.109e-12
36	1.716	6.64e-10	5.054e-12
37	1.681	6.23e-10	1.267e-11
38	1.652	6.77e-10	1.595e-13
39	1.568	7.61e-10	4.844e-13
40	1.527	7.14e-10	8.195e-12
41	1.497	6.22e-10	6.804e-12
42	1.483	5.32e-10	7.462e-12
43	1.468	5.52e-10	6.495e-12
44	1.466	5.52e-10	5.744e-11
45	1.453	5.40e-10	6.282e-12
46	1.438	5.94e-10	7.486e-12
47	1.427	5.56e-10	6.047e-12
48	1.409	5.87e-10	3.566e-12
49	1.406	5.85e-10	3.168e-12
50	1.397	6.56e-10	2.219e-12
51	1.375	6.77e-10	1.002e-13
52	1.338	6.65e-10	2.697e-12
53	1.324	5.90e-10	3.061e-12
54	1.315	6.67e-10	1.106e-13
55	1.280	6.08e-10	6.049e-12
56	1.269	6.08e-10	4.346e-12
57	1.255	6.85e-10	7.191e-12
58	1.248	6.99e-10	6.441e-12
59	1.223	9.51e-10	1.235e-11
60	1.218	8.66e-10	1.132e-11
61	1.199	7.00e-10	7.772e-12
62	1.189	6.73e-10	7.990e-12
63	1.172	6.64e-10	7.025e-12
64	1.164	1.19e-09	2.702e-11
65	1.078	5.13e-10	8.008e-12
66	1.044	6.31e-10	6.717e-12
67	1.018	6.40e-10	7.701e-12
68	0.893	1.73e-09	3.940e-11
69	0.880	1.35e-09	8.905e-12
70	0.866	1.69e-09	1.399e-10
71	0.855	7.08e-10	8.444e-12
72	0.848	6.94e-10	8.565e-12
73	0.644	6.81e-10	8.559e-12
74	0.638	6.77e-10	1.211e-11
75	0.617	6.84e-10	9.344e-12

Peak name	F2 [ppm]	D [m2/s]	error
76	0.400	6.63e-10	1.034e-11
77	0.394	6.70e-10	1.025e-11
78	0.371	6.67e-10	8.999e-12
79	0.288	1.87e-10	2.404e-12
80	0.117	6.79e-10	9.450e-12
81	0.111	6.71e-10	2.665e-11
82	0.090	6.78e-10	1.027e-11

Current fit display

