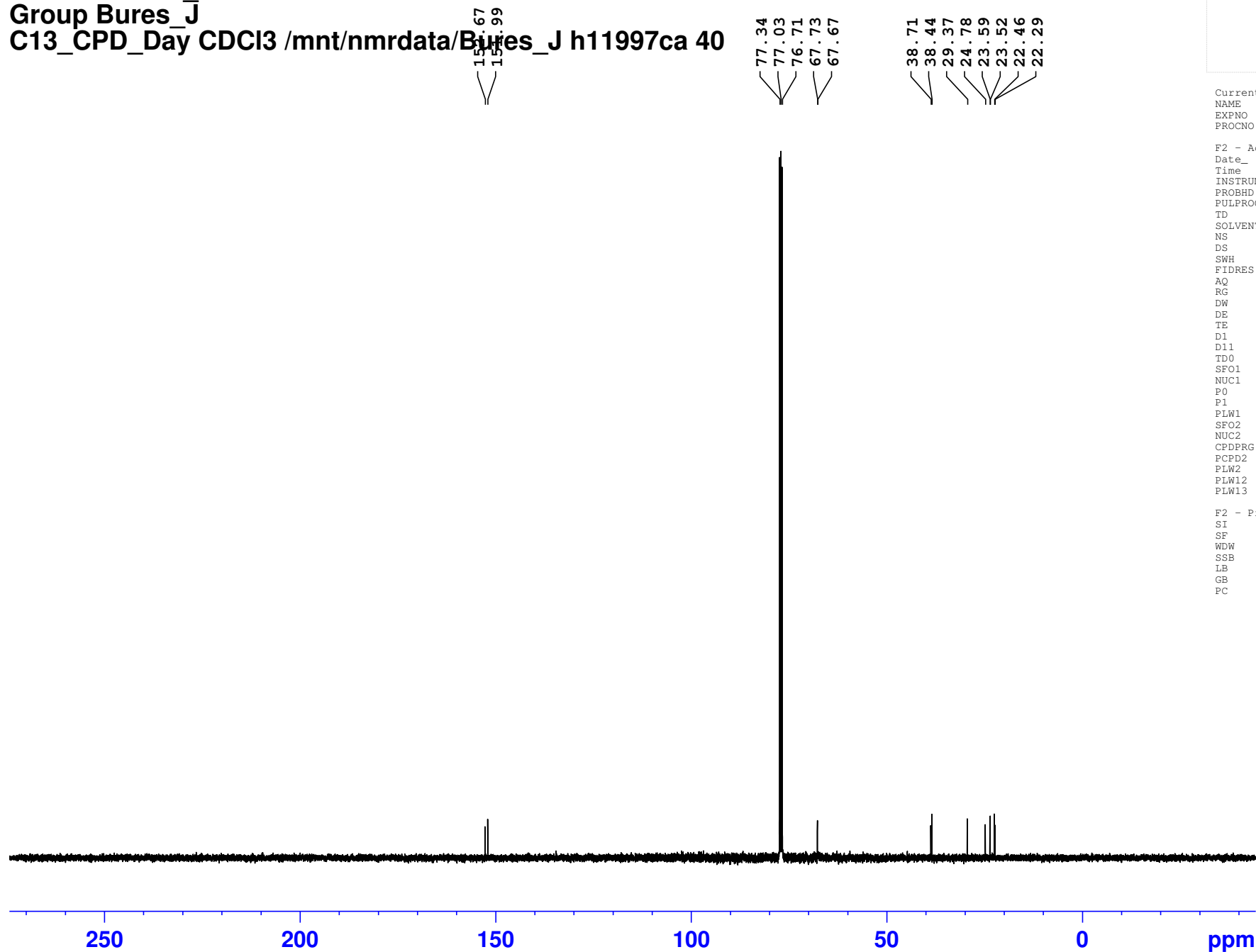


Ref 306-F2 C6\_oxime  
Group Bures\_J  
C13\_CPD\_Day CDC13 /mnt/nmrdata/Bures\_J h11997ca 40



Current Data Parameters  
NAME 20190731-0912-B400\_B.11-40  
EXPNO 11  
PROCNO 1

F2 - Acquisition Parameters  
Date\_ 20190731  
Time 9.25 h  
INSTRUM spect  
PROBHD Z130030\_0009 (  
PULPROG zgpg30  
TD 65536  
SOLVENT CDC13  
NS 64  
DS 4  
SWH 32051.281 Hz  
FIDRES 0.978127 Hz  
AQ 1.0223616 sec  
RG 71.8  
DW 15.600 usec  
DE 41.97 usec  
TE 298.0 K  
D1 2.00000000 sec  
D11 0.03000000 sec  
TD0 1  
SFO1 100.6092502 MHz  
NUC1 13C  
P0 3.33 usec  
P1 10.00 usec  
PLW1 33.00000000 W  
SFO2 400.0716003 MHz  
NUC2 1H  
CPDPRG[2] waltz16  
PCPD2 90.00 usec  
PLW2 7.40000010 W  
PLW12 0.13598000 W  
PLW13 0.06839600 W

F2 - Processing parameters  
SI 65536  
SF 100.5976815 MHz  
WDW EM  
SSB 0  
LB 1.00 Hz  
GB 0  
PC 1.40