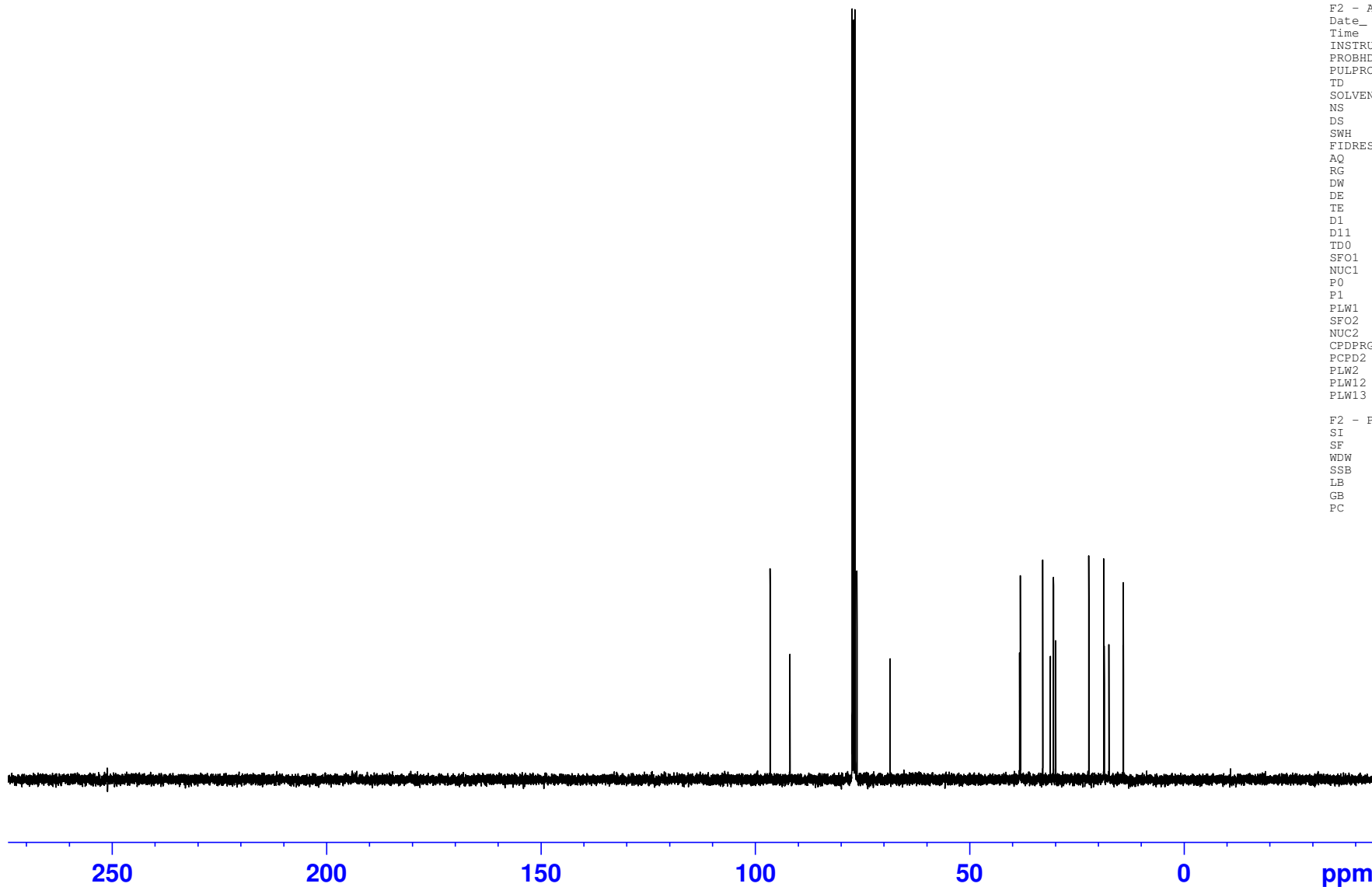


Ref C8 lactol 256

Group Bures_J

C13_CPD_Day CDCI3 /mnt/nmrdata/Bures_J h11997ca

96.49
91.86
77.35
77.04
76.72
76.24
68.50
38.30
38.11
32.90
31.13
30.38
29.88
22.15
18.67
18.55
17.45
14.14
14.08



Current Data Parameters
NAME 20190702-0859-B400_B.11-4
EXPNO 11
PROCNO 1

F2 - Acquisition Parameters
Date_ 20190702
Time 9.09 h
INSTRUM spect
PROBHD z130030_0009 (
PULPROG zgpg30
TD 65536
SOLVENT CDCl3
NS 32
DS 4
SWH 32051.281 Hz
FIDRES 0.978127 Hz
AQ 1.0223616 sec
RG 71.8
DW 15.600 usec
DE 41.97 usec
TE 298.0 K
D1 2.00000000 sec
D11 0.03000000 sec
TD0 1
SFO1 100.6092502 MHz
NUC1 13C
P0 3.33 usec
P1 10.00 usec
PLW1 33.00000000 W
SFO2 400.0716003 MHz
NUC2 1H
CPDPRG[2] waltz16
PCPD2 90.00 usec
PLW2 7.40000010 W
PLW12 0.13598000 W
PLW13 0.06839600 W

F2 - Processing parameters
SI 65536
SF 100.5976815 MHz
WDW EM
SSB 0
LB 1.00 Hz
GB 0
PC 1.40