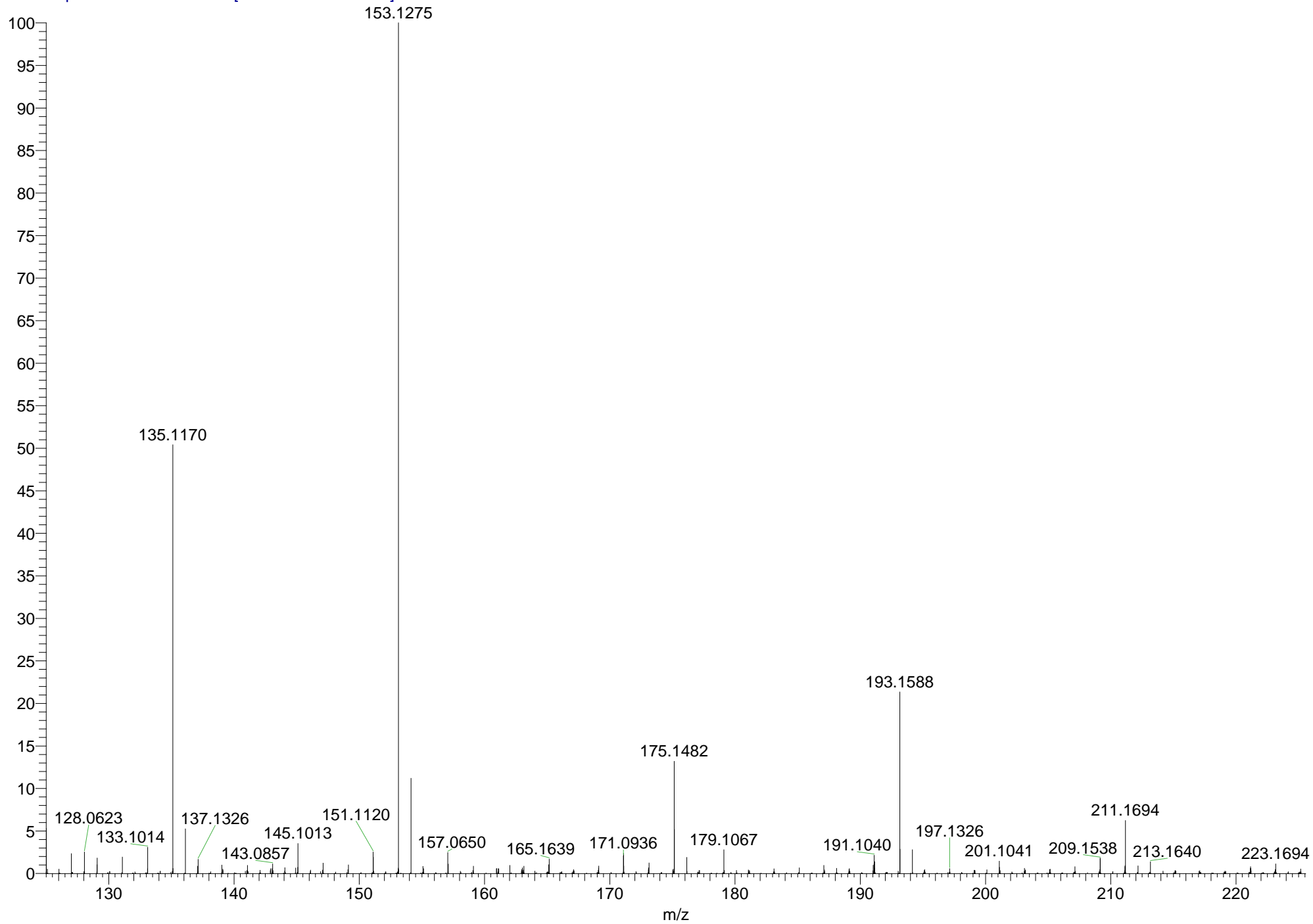


09-12-19_MS57944 #80 RT: 0.31 AV: 1 NL: 5.91E8
T: FTMS + p APCI corona Full ms [125.0000-1000.0000]



SAMPLE: MS57944 T.HE TH166

THEORETICAL MASS FOR $C_{13}H_{22}O_2H^+$ = 211.1693

FOUND MASS = 211.1694