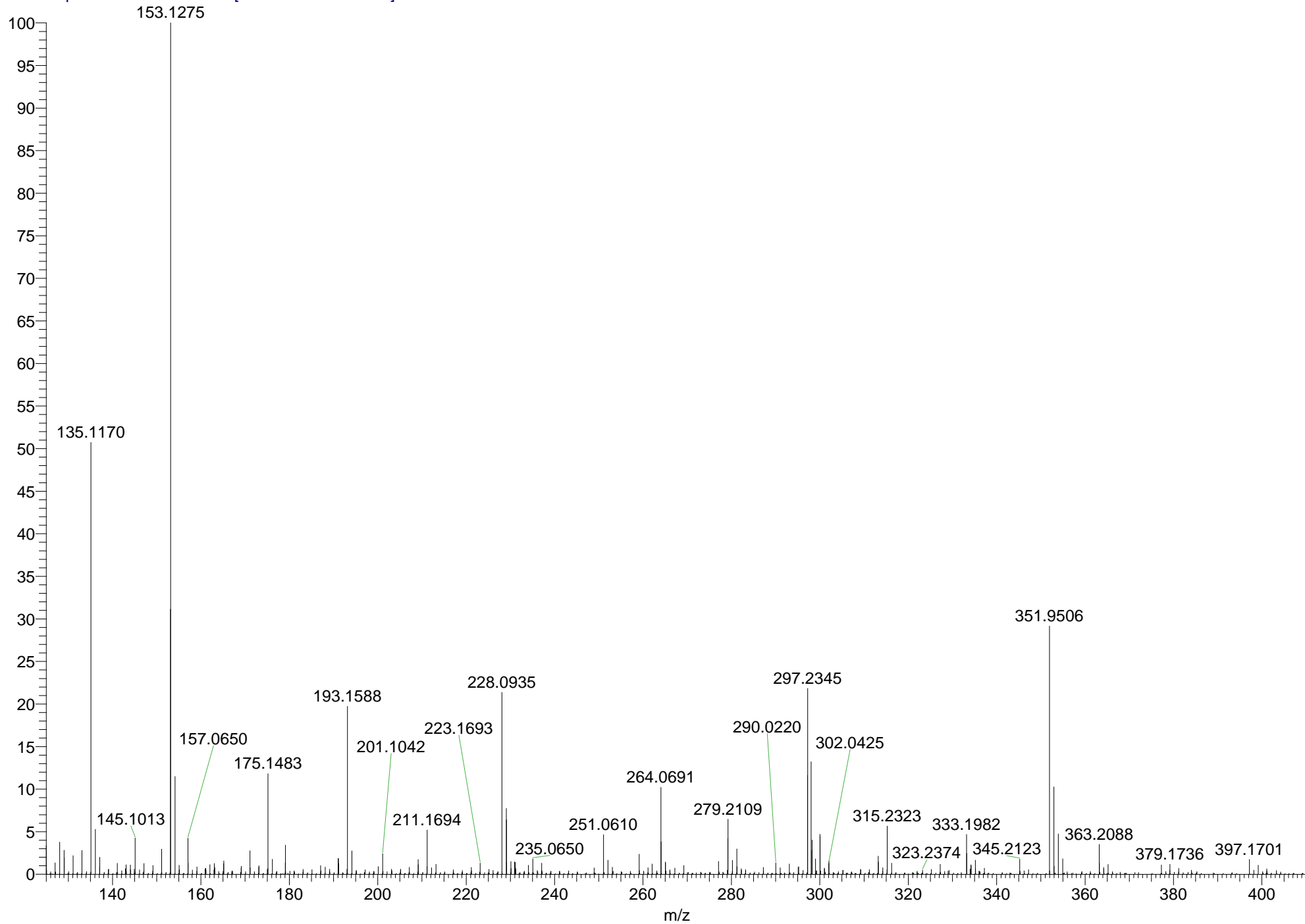


09-12-19\_MS57945 #16 RT: 0.07 AV: 1 NL: 5.52E8  
T: FTMS + p APCI corona Full ms [125.0000-1000.0000]



SAMPLE: MS57945 T.HE TH177

THEORETICAL MASS FOR C<sub>21</sub>H<sub>31</sub>O<sub>2</sub><sup>+</sup> = 315.2319

FOUND MASS = 315.2323

ERROR (PPM) = 1.41