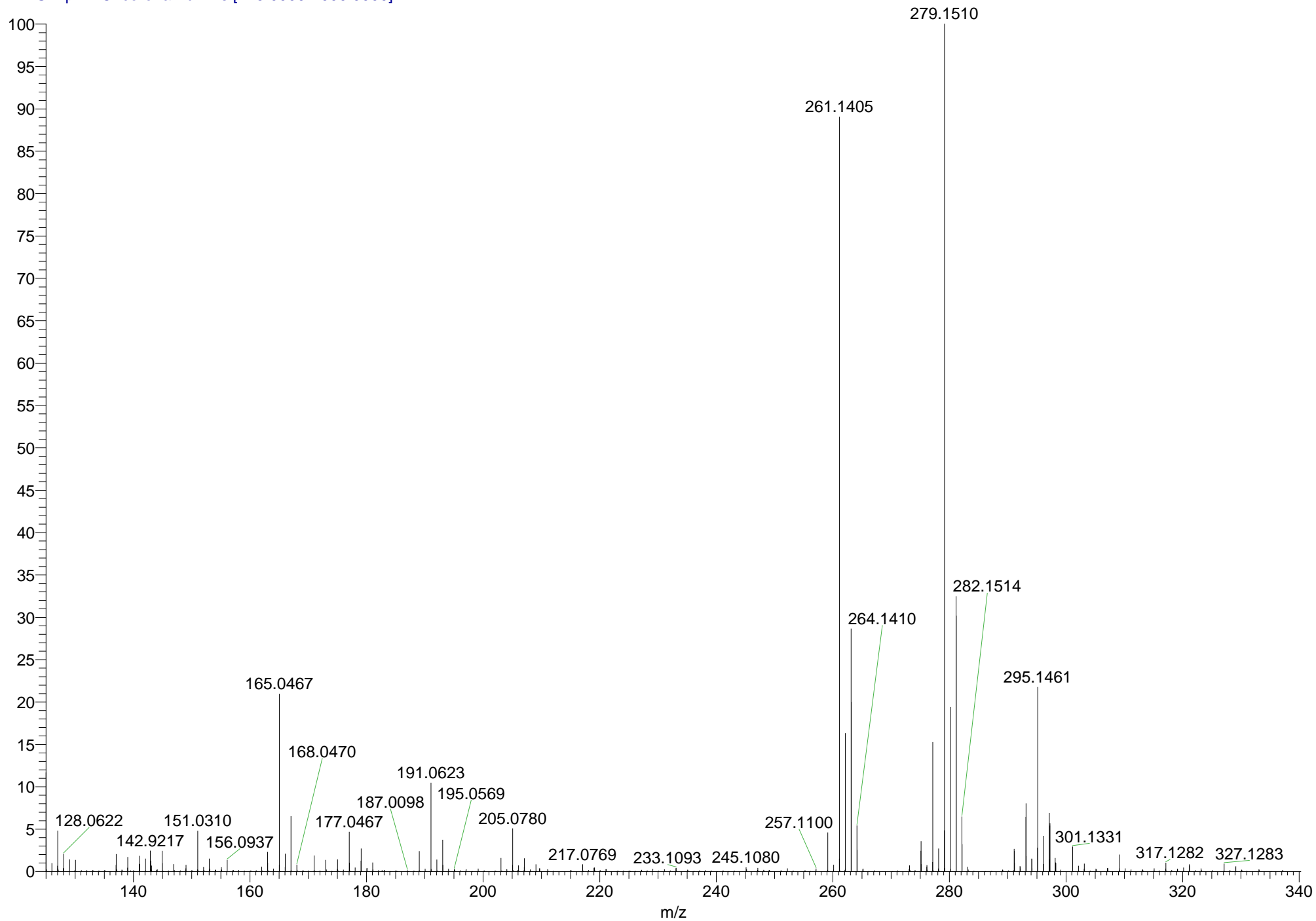


MS57544 #189 RT: 0.88 AV: 1 SB: 84 0.08-0.47 NL: 8.71E7  
T: FTMS + p APCI corona Full ms [125.0000-1000.0000]



SAMPLE: MS57544 T.HE TH176

THEORETICAL MASS FOR C<sub>17</sub>H<sub>24</sub>OCl<sup>+</sup> = 279.1510

FOUND MASS = 279.1510

ERROR (PPM) = 0