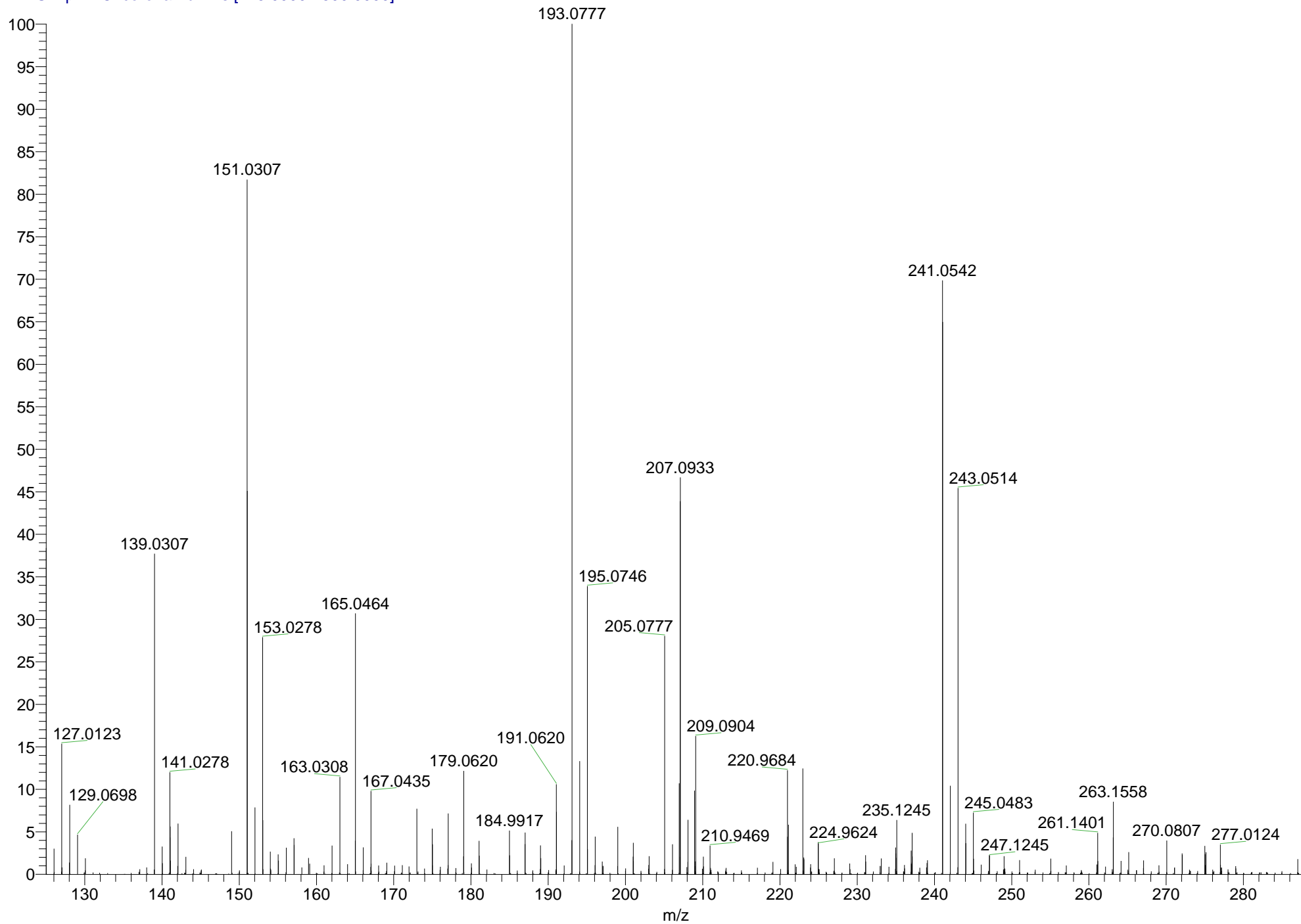


MS57579 #44 RT: 0.20 AV: 1 SB: 18 0.01-0.09 NL: 7.69E8
T: FTMS + p APCI corona Full ms [125.0000-1500.0000]



SAMPLE: MS57579 T.HE TH174

EXPECTED ION OFR C12H16Cl+ NOT FOUND, BUT ION FOUND FOR C12H14Cl+

THEORETICAL MASS = 193.0779

FOUND MASS = 193.0777

ERROR (PPM) = -0.80