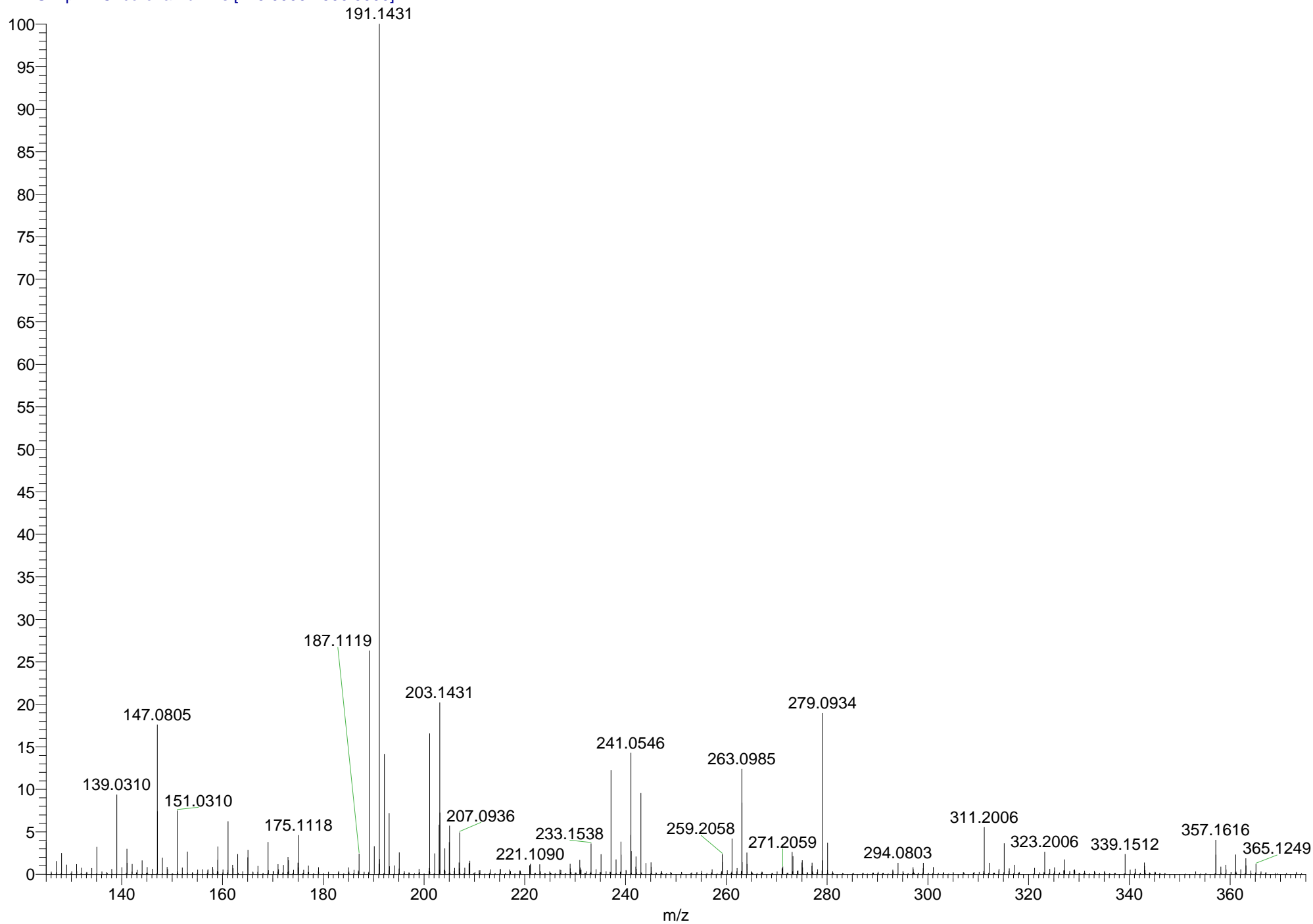


MS57580 #28 RT: 0.13 AV: 1 NL: 1.57E9

T: FTMS + p APCI corona Full ms [125.0000-1500.0000]



SAMPLE: T.HE TH173

THEORETICAL MASS FOR C₁₃H₁₉O⁺ = 191.1430

FOUND MASS = 191.1431

ERROR (PPM) = 0.31