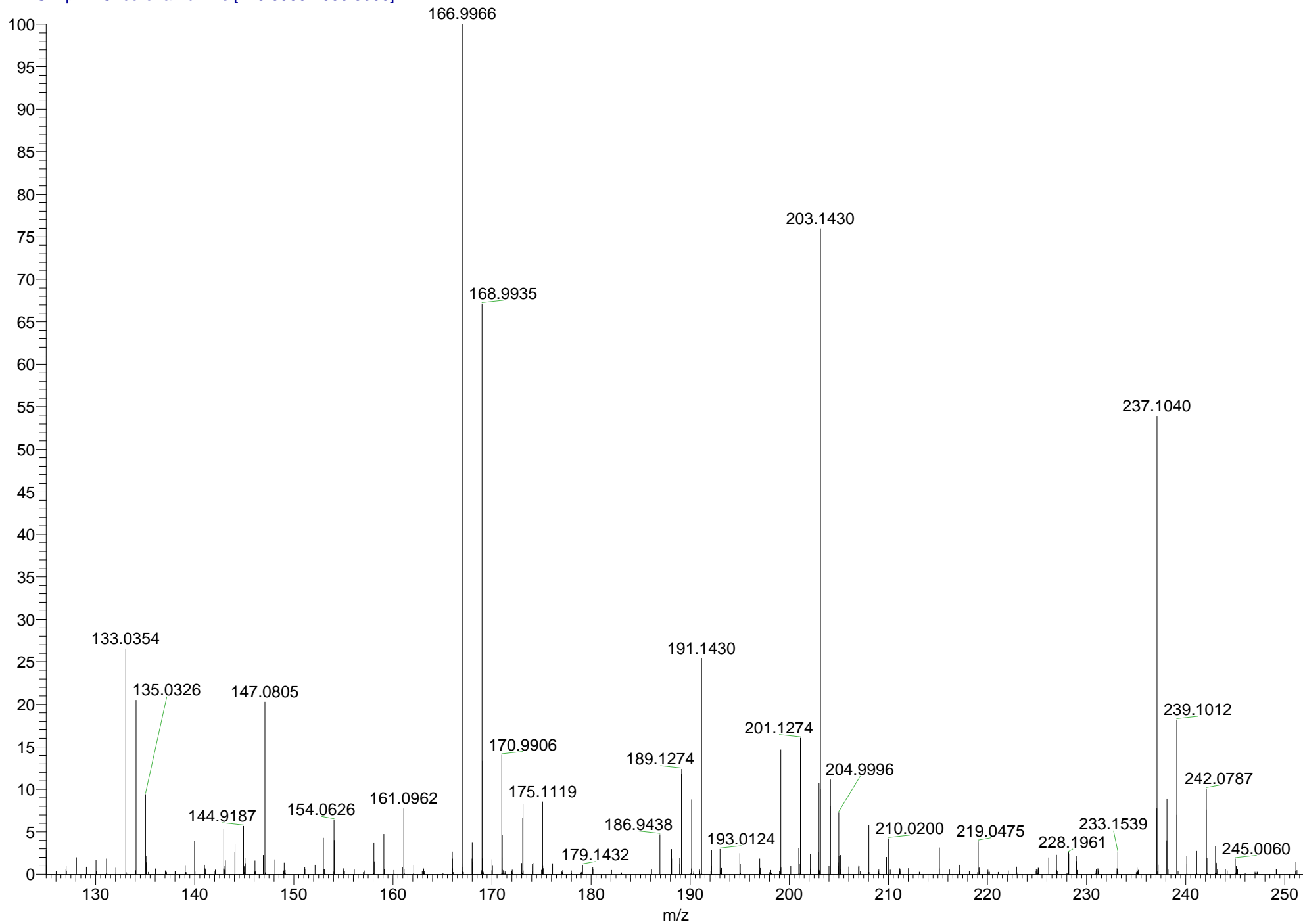


MS57517 #56 RT: 0.26 AV: 1 SB: 37 0.03-0.20 NL: 7.17E7
T: FTMS + p APCI corona Full ms [125.0000-1000.0000]



SAMPLE: MS57516 Z.SHI ALB391

THEORETICAL MASS FOR C₁₃H₁₉O⁺ = 191.1430

FOUND MASS = 191.1430

ERROR (PPM) = 0