

7.530
7.527
7.522
7.509
7.506
7.422
7.417
7.404
7.387
7.383
7.284
7.216
7.214
7.211
7.196
7.177
4.934
4.923
4.907
4.896
4.880
4.869
2.126
1.944
1.937
1.755
1.747
1.742
1.718
1.713
1.577
1.565
1.465
1.147
1.137
1.121
1.108
1.080
0.959
0.946
0.943
0.929
0.912
0.842
0.825

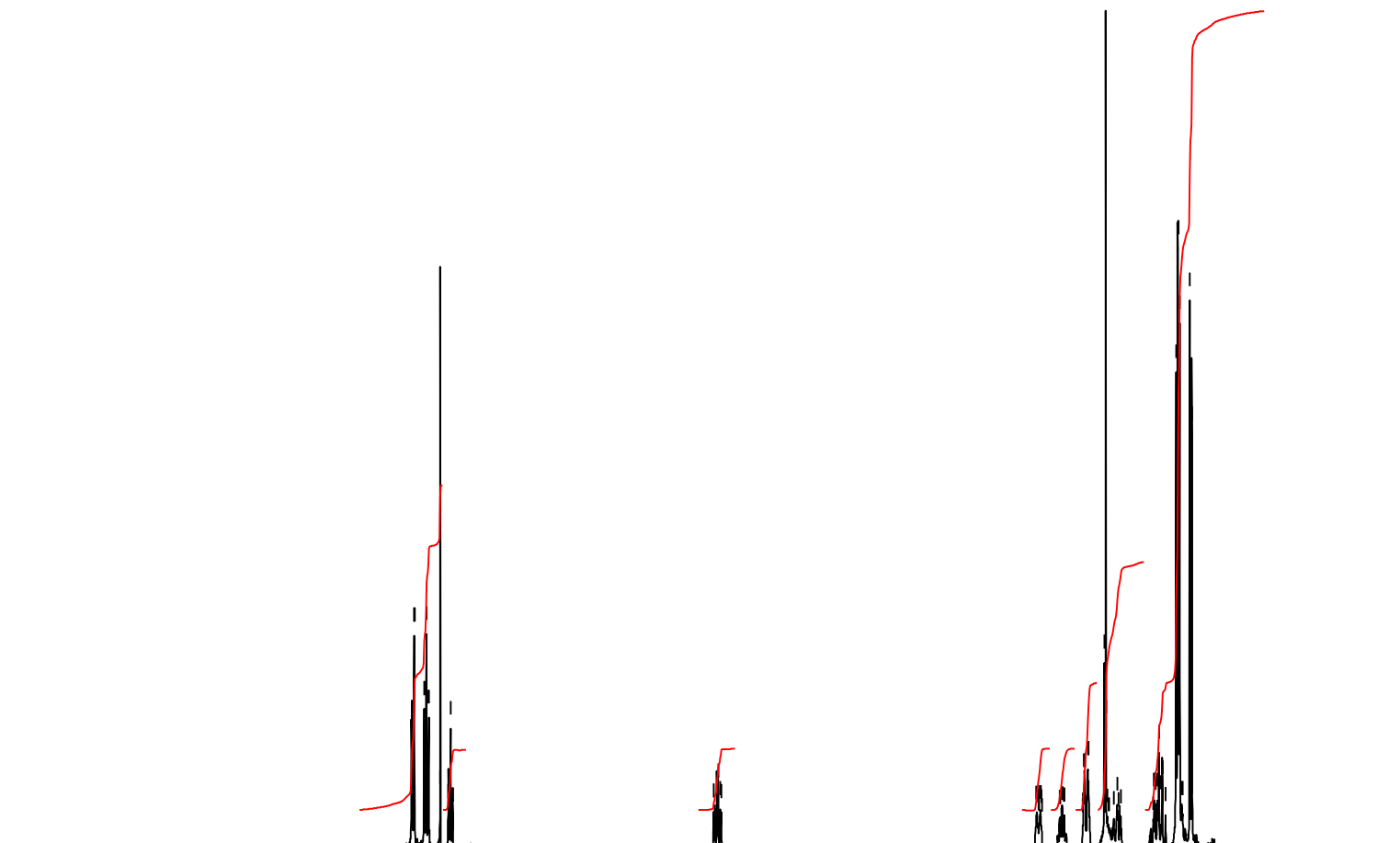
Av-400C

Current Data Parameters
NAME Jul11-2018
EXPNO 50
PROCNO 1

F2 - Acquisition Parameters
Date_ 20180711
Time 14.46
INSTRUM spect
PROBHD 5 mm PABBO BB/
PULPROG zg30
TD 32768
SOLVENT CDC13
NS 16
DS 2
SWH 8012.820 Hz
FIDRES 0.244532 Hz
AQ 2.0447233 sec
RG 199.33
DW 62.400 usec
DE 6.50 usec
TE 300.5 K
D1 1.00000000 sec
TD0 1

===== CHANNEL f1 =====
SFO1 400.2024012 MHz
NUC1 1H
P1 11.25 usec
PLW1 19.95299911 W

F2 - Processing parameters
SI 16384
SF 400.2000000 MHz
WDW EM
SSB 0
LB 0.30 Hz
GB 0
PC 1.00



10 9 8 7 6 5 4 3 2 1 0 ppm

18.62
3.45
3.52
3.51
3.50
7.29
14.23
45.88