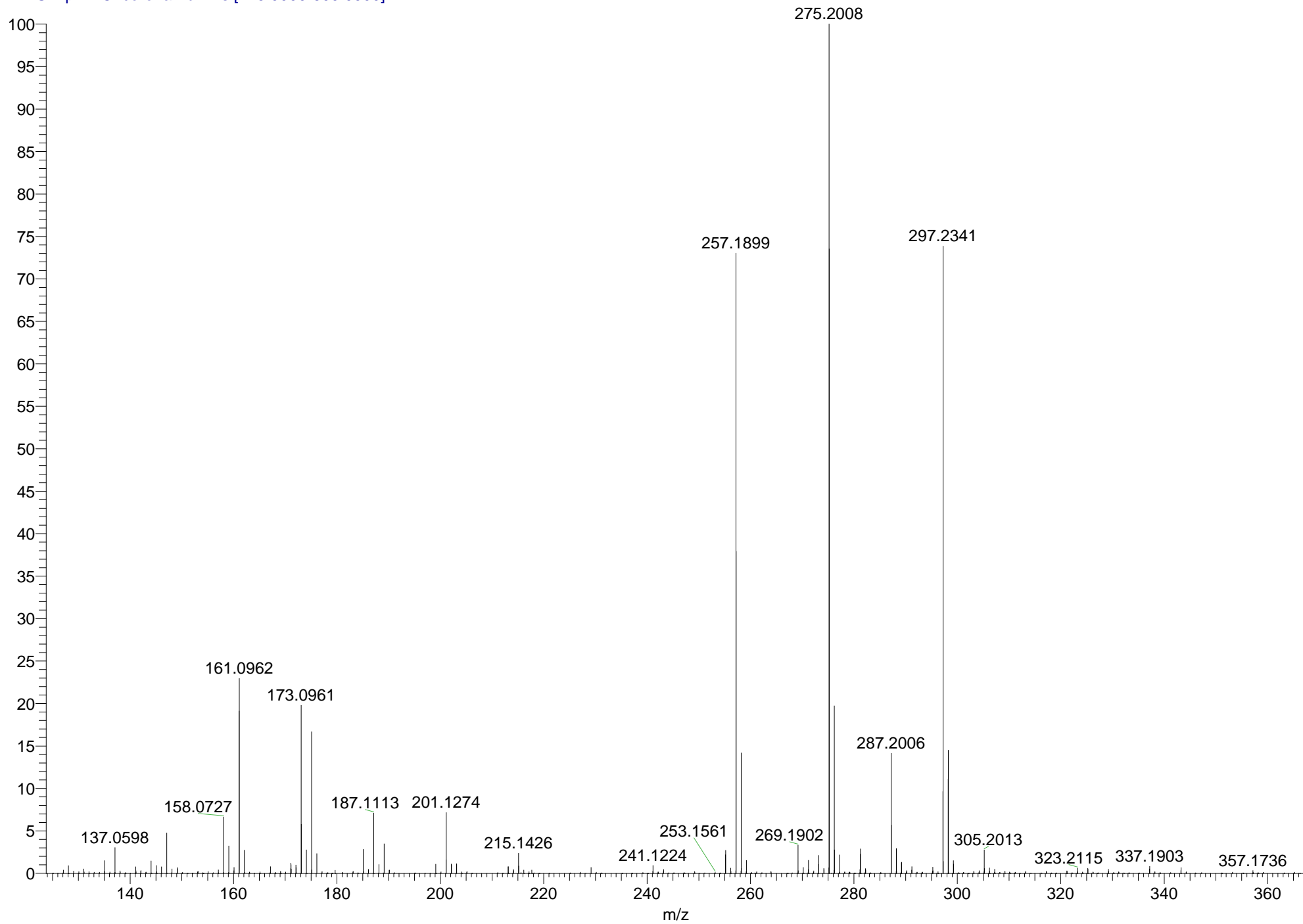


MS53279 #220 RT: 0.28 AV: 1 SB: 189 0.02-0.26 NL: 2.24E9
T: FTMS + p APCI corona Full ms [125.0000-600.0000]



SAMPLE: MS53279 Z.SHI ALB334

THEORETICAL MASS FOR $C_{18}H_{27}O_2^+$ = 275.2006

FOUND MASS = 275.2008

ERROR (PPM) = 0.88