

Single Mass Analysis (displaying only valid results)

Tolerance = 10.0 PPM / DBE: min = -1.5, max = 50.0

Selected filters: None

Monoisotopic Mass, Odd and Even Electron Ions

221 formula(e) evaluated with 1 results within limits (up to 30 closest results for each mass)

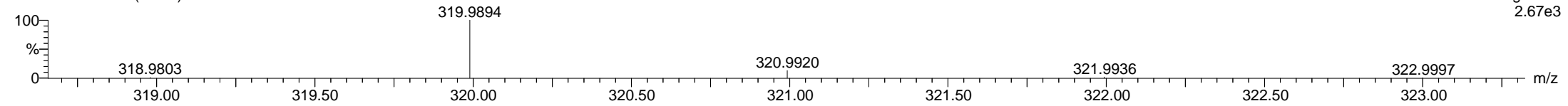
Elements Used:

C: 11-11 H: 0-150 N: 0-10 O: 0-10 127I: 0-2

K.BAHOU KB602 AM  
MS37899AMA 11 (0.963)

Magnetic Sector

17-May-2017  
Voltage EI+  
2.67e3



Minimum: -1.5  
Maximum: 7.0 10.0 50.0

Mass	Calc. Mass	mDa	PPM	DBE	i-FIT	Formula
319.9894	319.9909	-1.5	-4.7	5.0	0.7	C11 H13 O3 127I