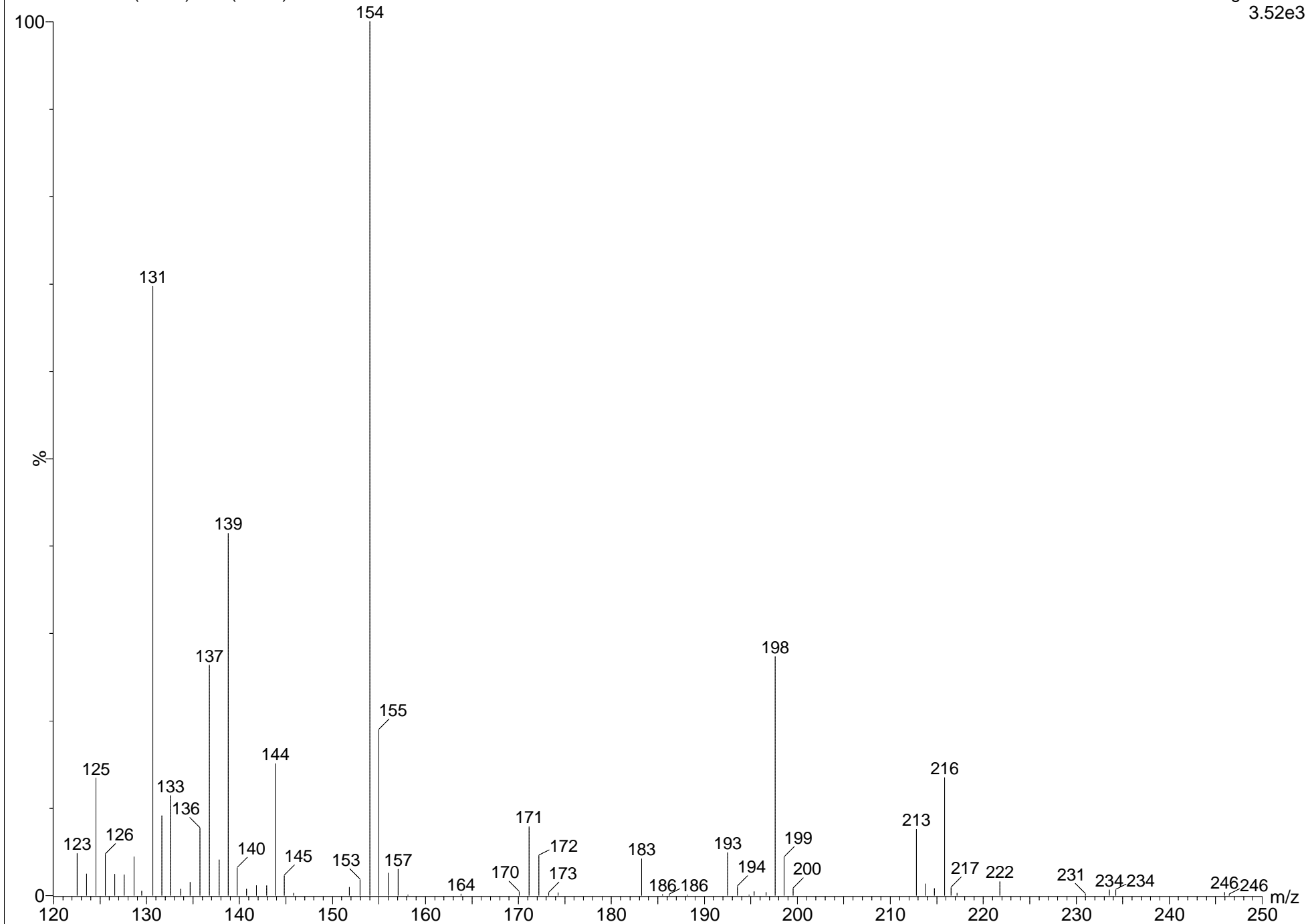


Z.SHI ALB346

MS53838B 90 (1.261) Cm (88:90)

Magnet EI+
3.52e3





This document was created with the Win2PDF "print to PDF" printer available at <http://www.win2pdf.com>

This version of Win2PDF 10 is for evaluation and non-commercial use only.

This page will not be added after purchasing Win2PDF.

<http://www.win2pdf.com/purchase/>

Single Mass Analysis

Tolerance = 10.0 PPM / DBE: min = -1.5, max = 50.0

Selected filters: None

Monoisotopic Mass, Odd and Even Electron Ions

104 formula(e) evaluated with 1 results within limits (up to 50 best isotopic matches for each mass)

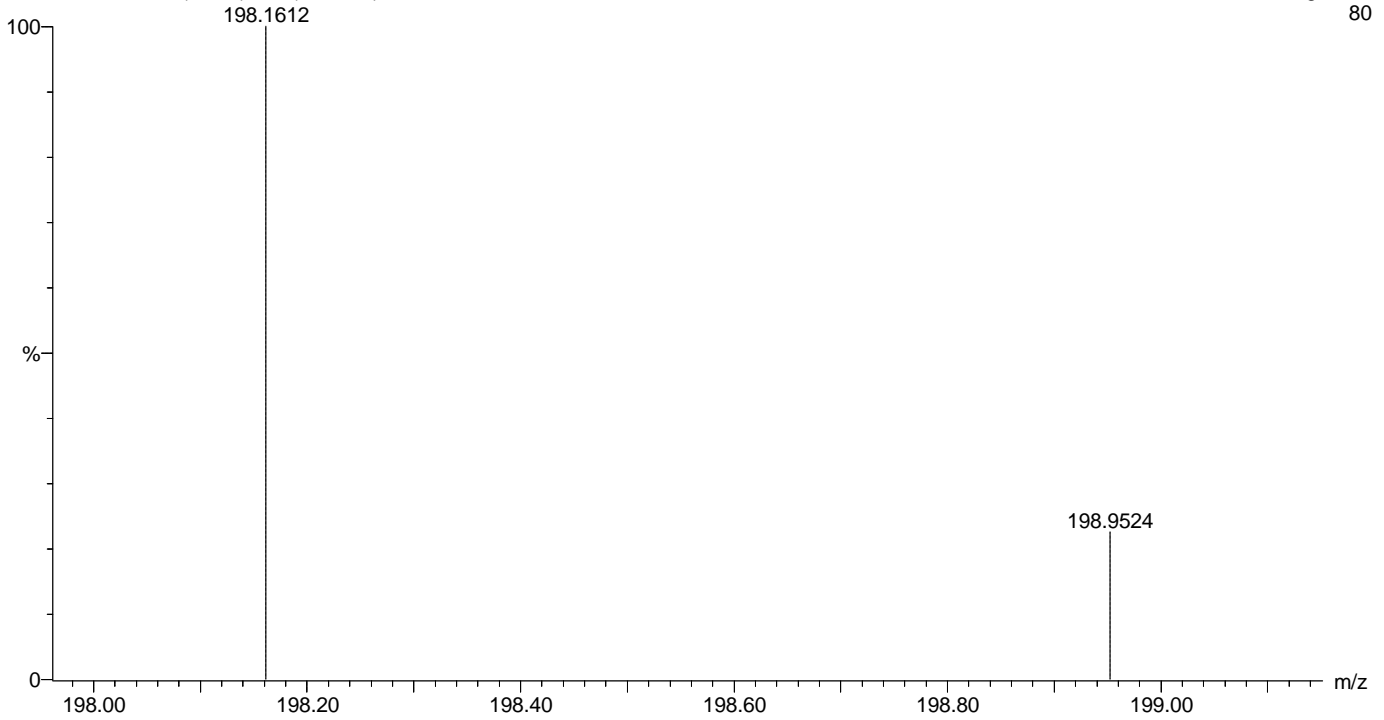
Elements Used:

C: 12-12 H: 0-1000 N: 0-10 O: 0-10 I: 0-2

Z.SHI ALB346 AM

MS53838AMA 134 (4.920) Cm (133:134)

Voltage EI+
80



Minimum: -1.5
Maximum: 5.0 10.0 50.0

Mass	Calc. Mass	mDa	PPM	DBE	i-FIT	Formula
198.1612	198.1620	-0.8	-4.0	2.0	5546045.0	C12 H22 O2



This document was created with the Win2PDF "print to PDF" printer available at <http://www.win2pdf.com>

This version of Win2PDF 10 is for evaluation and non-commercial use only.

This page will not be added after purchasing Win2PDF.

<http://www.win2pdf.com/purchase/>