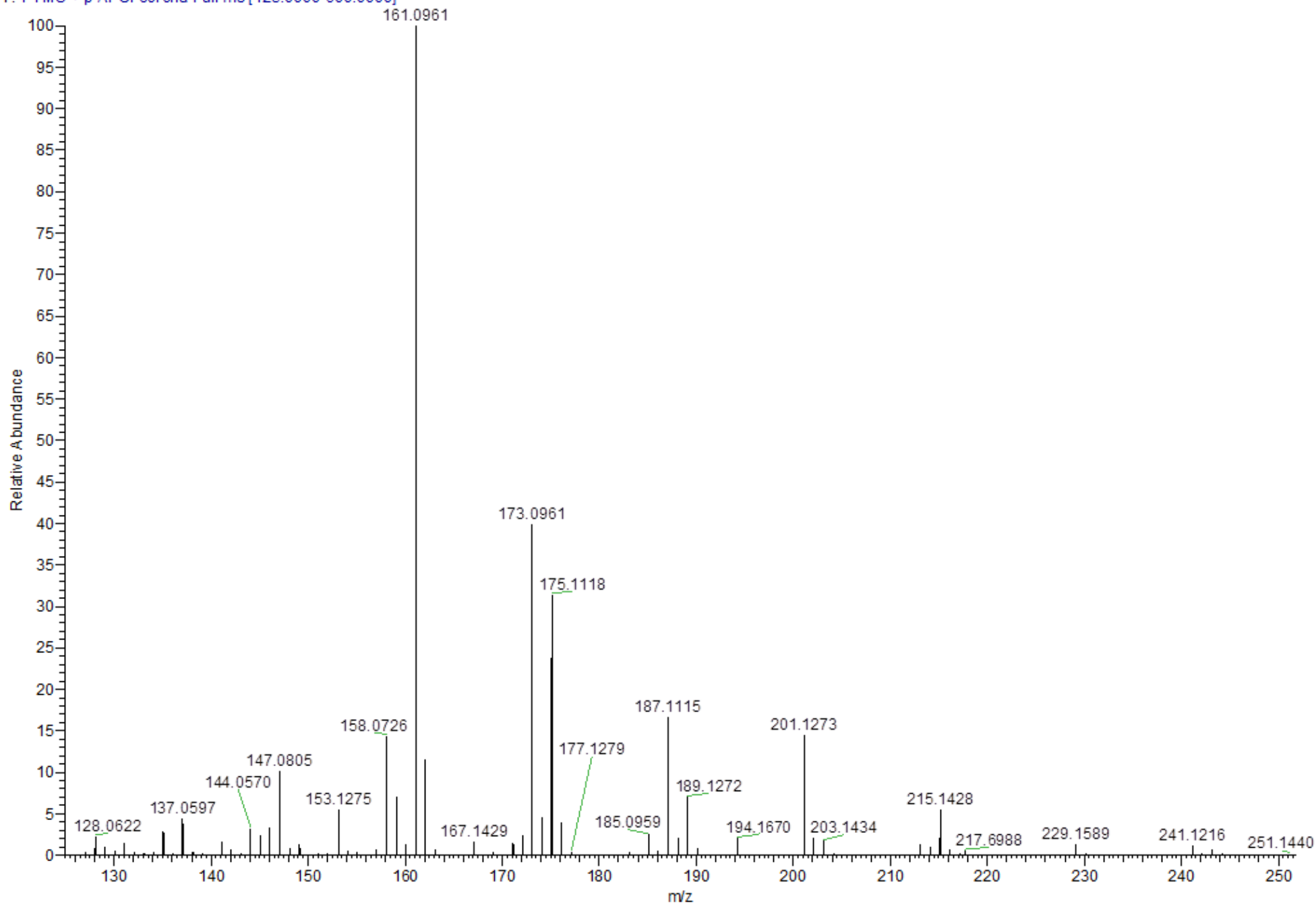


MS53280 #11 RT: 0.01 AV: 1 NL: 1.25E9
T: FTMS + p APCI corona Full ms [125.0000-600.0000]



MS53280 Z.SHI ALB328

THEORETICAL MASS FOR C₁₃H₁₇O = 196.1671

FOUND MASS = 196.1670

ERROR (PPM) = -0.51