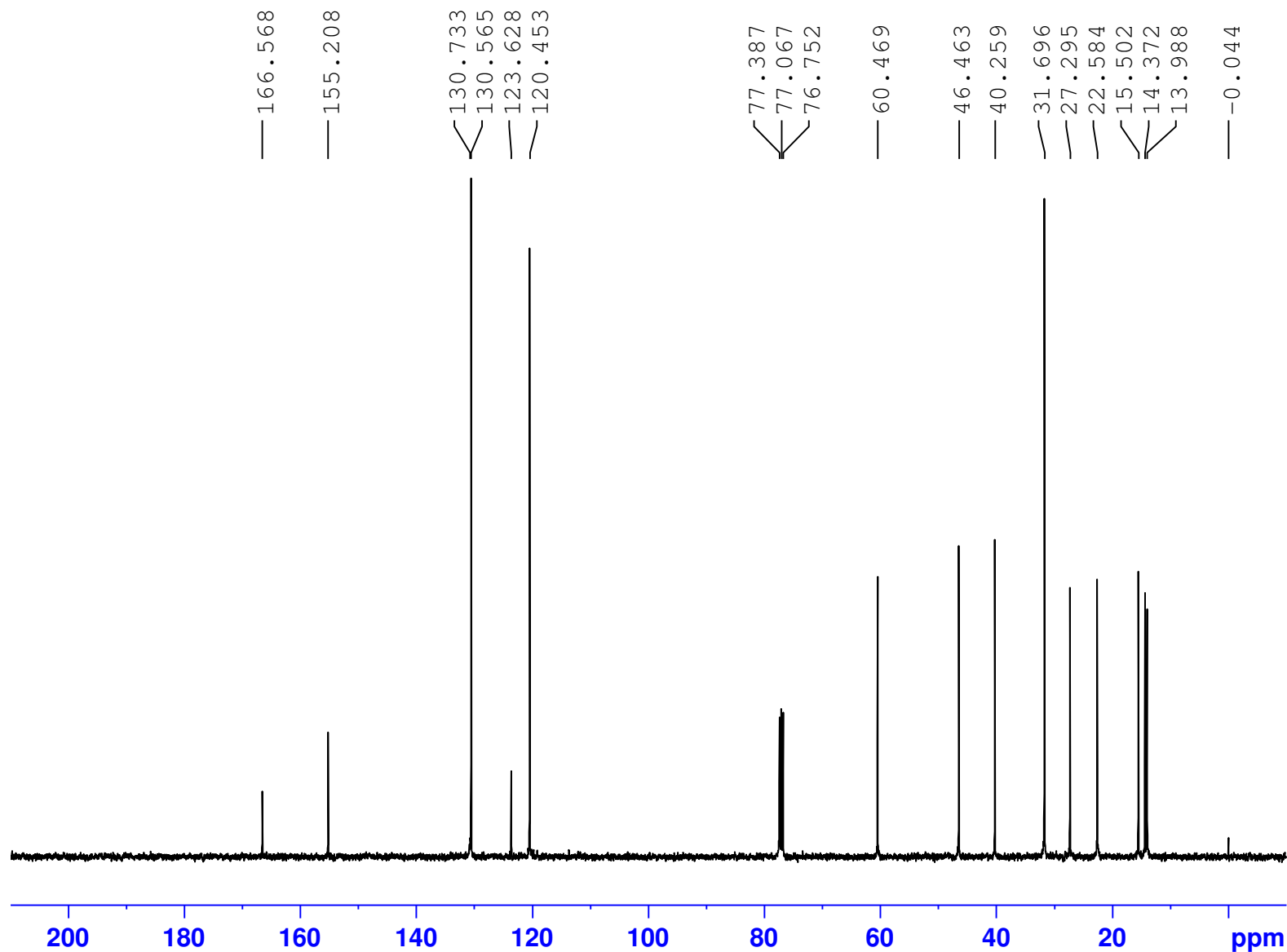


6FS821Ax1

Av-400C



Current Data Parameters
NAME May24-2017
EXPNO 50
PROCNO 1

F2 - Acquisition Parameters
Date_ 20170525
Time 12.31
INSTRUM spect
PROBHD 5 mm PABBO BB-
PULPROG zgpg30
TD 32768
SOLVENT CDC13
NS 320
DS 4
SWH 28409.092 Hz
FIDRES 0.866977 Hz
AQ 0.5767168 sec
RG 199.33
DW 17.600 usec
DE 6.50 usec
TE 300.4 K
D1 1.00000000 sec
D11 0.03000000 sec
TD0 1

===== CHANNEL f1 =====
SFO1 100.6414394 MHz
NUC1 13C
P1 10.80 usec
PLW1 39.99399948 W

===== CHANNEL f2 =====
SFO2 400.2020010 MHz
NUC2 1H
CPDPRG[2] waltz16
PCPD2 90.00 usec
PLW2 19.95299911 W
PLW12 0.19953001 W
PLW13 0.16162001 W

F2 - Processing parameters
SI 16384
SF 100.6303700 MHz
WDW EM
SSB 0
LB 2.00 Hz
GB 0
PC 1.40