

Single Mass Analysis (displaying only valid results)

Tolerance = 10.0 PPM / DBE: min = -1.5, max = 50.0

Selected filters: None

Monoisotopic Mass, Odd and Even Electron Ions

179 formula(e) evaluated with 1 results within limits (up to 30 closest results for each mass)

Elements Used:

C: 14-14 H: 0-150 11B: 0-1 N: 0-10 O: 0-10

C.NIELSEN CN 543 3 AM

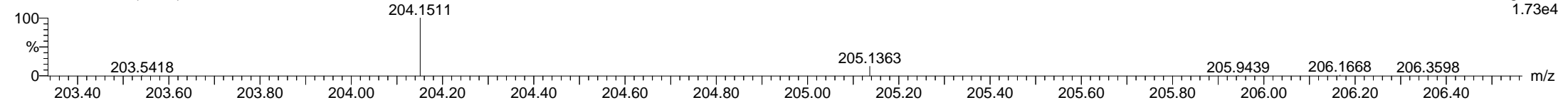
MS43445AMA 53 (1.330)

Magnetic Sector

06-Feb-2018

Voltage EI+

1.73e4



Minimum: -1.5  
 Maximum: 7.0 10.0 50.0

Mass	Calc. Mass	mDa	PPM	DBE	i-FIT	Formula
204.1511	204.1514	-0.3	-1.5	5.0	82.4	C14 H20 O