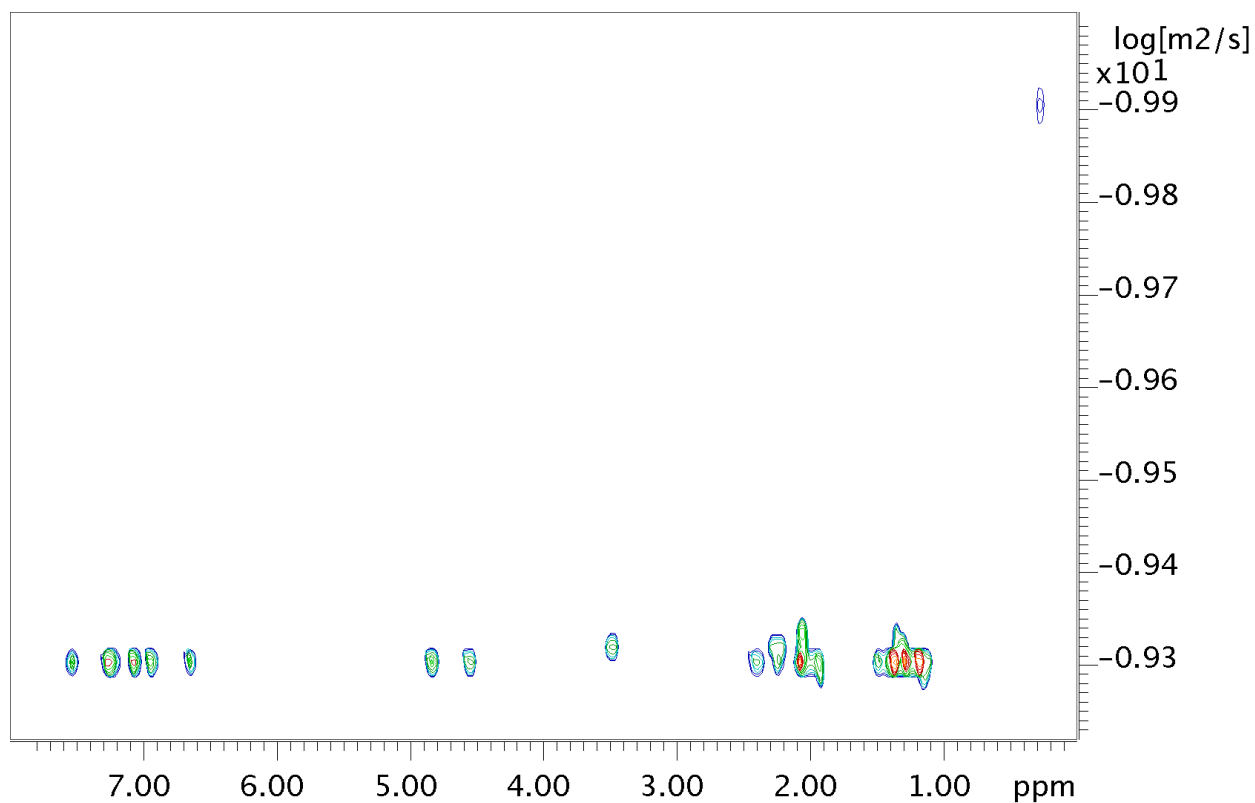
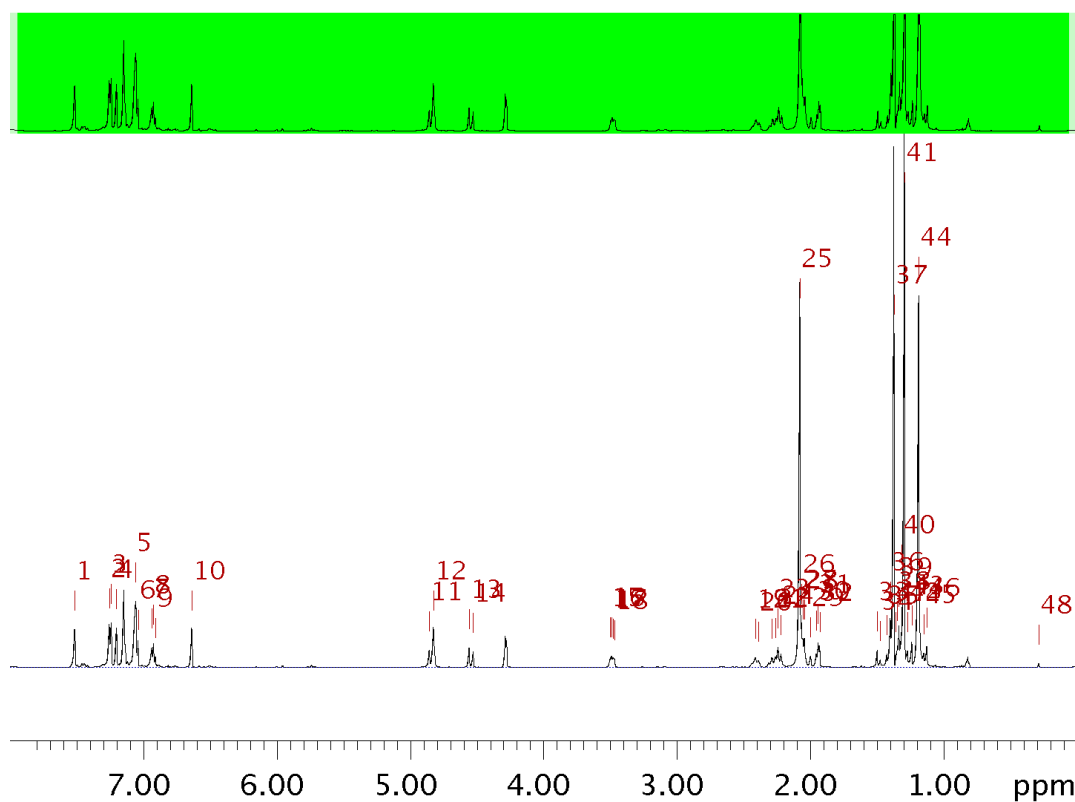


# • Diffusion Analysis



sample name:	demosample
Description/Title:	standard demo sample
Origin:	in-house
Date of preparation:	06 / 2005
Lab Book Number:	000



Fitted function:	$f(x) = A * \exp(-D * x^2 * \gamma^2 * \text{littleDelta}^2 * (\text{bigDelta} - \text{littleDelta}/3) * 10^4)$
used gamma:	26752 rad/(s*Gauss)
used little delta:	0.0036000 s
used big delta:	0.039900 s
used gradient strength:	variable
Random error estimation of data:	RMS per spectrum (or trace/plane)
Systematic error estimation of data:	worst case per peak scenario
Fit parameter Error estimation method:	from Monte Carlo simulations
Confidence level:	95%
Used peaks:	automatically picked peaks
Used integrals:	peak intensities
Used Gradient strength:	all values (including replicates) used

Peak name	F2 [ppm]	D [m2/s]	error
1	7.515	4.95e-10	1.933e-12
2	7.256	4.89e-10	1.751e-12
3	7.241	4.91e-10	1.562e-12
4	7.202	4.94e-10	1.773e-12
5	7.057	5.01e-10	1.184e-12
6	7.039	5.03e-10	2.948e-12
7	6.938	4.89e-10	3.889e-12
8	6.924	4.96e-10	2.995e-12
9	6.910	4.98e-10	6.871e-12
10	6.637	4.96e-10	1.852e-12
11	4.855	4.97e-10	4.374e-12
12	4.825	4.97e-10	1.852e-12
13	4.556	4.95e-10	3.899e-12
14	4.526	4.95e-10	4.510e-12
15	3.497	4.81e-10	7.622e-12
16	3.488	4.86e-10	6.515e-12
17	3.476	4.84e-10	6.660e-12
18	3.467	4.83e-10	8.307e-12
19	2.410	4.89e-10	8.043e-12
20	2.387	4.92e-10	1.161e-11
21	2.286	4.81e-10	7.398e-12
22	2.258	4.81e-10	6.815e-12
23	2.240	4.88e-10	3.597e-12
24	2.218	4.87e-10	5.586e-12
25	2.076	4.99e-10	2.000e-13
26	2.065	4.59e-10	1.384e-12
27	2.054	4.78e-10	2.279e-12
28	2.043	4.94e-10	2.682e-12
29	1.997	5.02e-10	6.745e-12
30	1.953	4.93e-10	5.514e-12



Peak name	F2 [ppm]	D [m2/s]	error
31	1.940	5.00e-10	3.056e-12
32	1.928	5.10e-10	3.775e-12
33	1.497	4.90e-10	4.551e-12
34	1.474	4.88e-10	9.790e-12
35	1.424	4.88e-10	5.568e-12
36	1.398	4.91e-10	1.504e-12
37	1.371	5.05e-10	1.478e-13
38	1.345	4.96e-10	3.503e-12
39	1.333	4.87e-10	1.693e-12
40	1.312	4.75e-10	1.851e-12
41	1.292	4.99e-10	1.438e-13
42	1.269	5.04e-10	4.243e-12
43	1.237	5.02e-10	2.848e-12
44	1.186	5.03e-10	1.988e-13
45	1.147	5.22e-10	5.827e-12
46	1.125	5.03e-10	3.604e-12
47	1.358	4.58e-10	4.777e-12
48	0.285	1.23e-10	6.538e-12

## Current fit display

