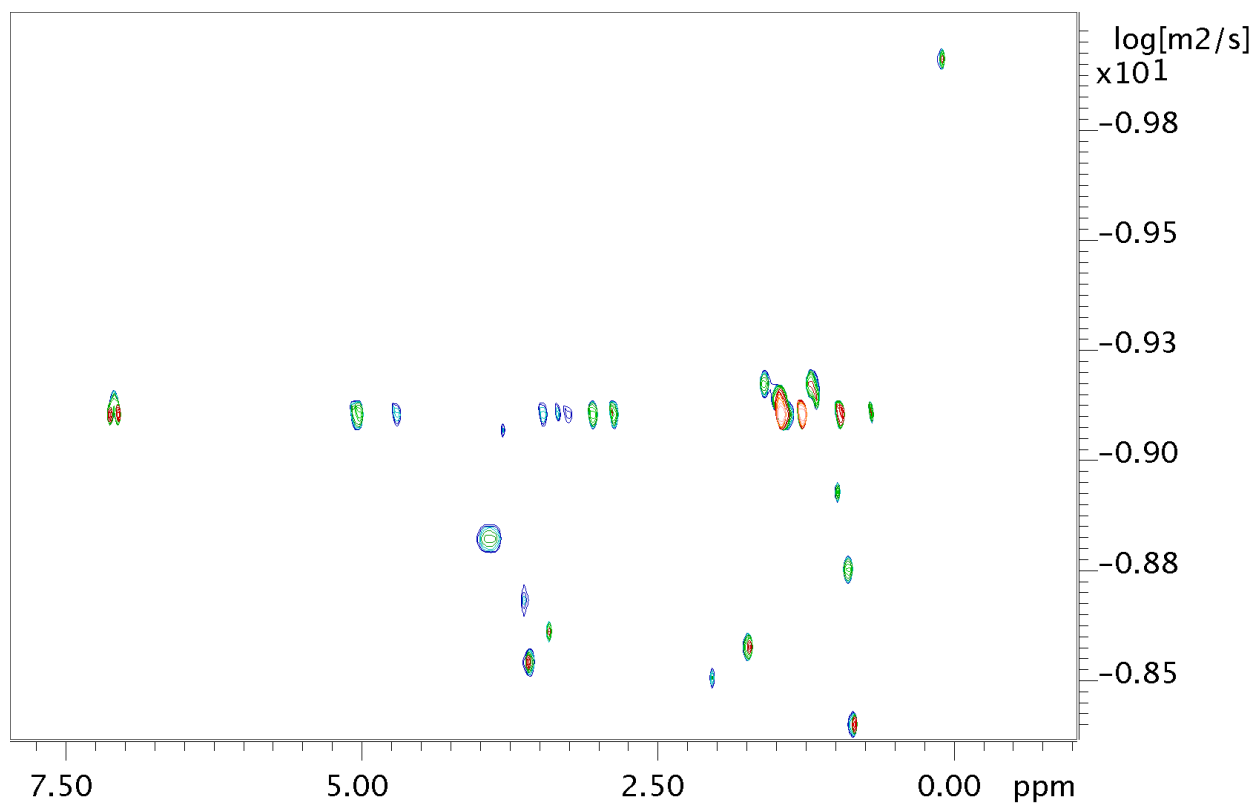
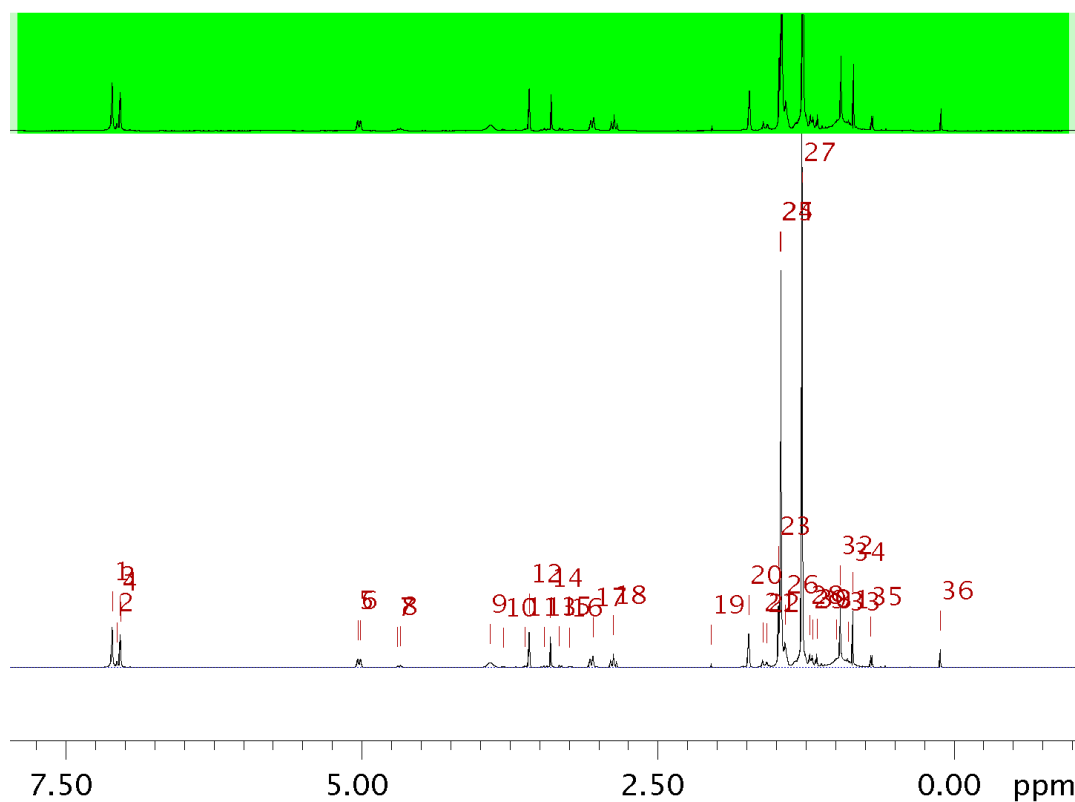


• Diffusion Analysis



sample name:	demosample
Description/Title:	standard demo sample
Origin:	in-house
Date of preparation:	06 / 2005
Lab Book Number:	000



Fitted function:	$f(x) = A * \exp(-D * x^2 * \gamma^2 * \text{littleDelta}^2 * (\text{bigDelta} - \text{littleDelta}/3) * 10^4)$
used gamma:	26752 rad/(s*Gauss)
used little delta:	0.0036000 s
used big delta:	0.029900 s
used gradient strength:	variable
Random error estimation of data:	RMS per spectrum (or trace/plane)
Systematic error estimation of data:	worst case per peak scenario
Fit parameter Error estimation method:	from Monte Carlo simulations
Confidence level:	95%
Used peaks:	peaks from /opt/topspin/data/cr/nmr/~TEMP/1/pdata/1/peaklist.xml
Used integrals:	peak intensities
Used Gradient strength:	all values (including replicates) used

Peak name	F2 [ppm]	D [m2/s]	error
1	7.106	7.73e-10	9.477e-13
2	7.068	7.45e-10	6.221e-12
3	7.041	7.75e-10	1.285e-12
4	7.037	7.78e-10	1.170e-12
5	5.033	7.77e-10	4.385e-12
6	5.010	7.80e-10	4.648e-12
7	4.696	7.82e-10	2.178e-11
8	4.674	7.74e-10	2.047e-11
9	3.913	1.54e-09	2.788e-11
10	3.804	8.57e-10	3.198e-11
11	3.621	2.14e-09	1.573e-10
12	3.585	2.77e-09	1.105e-11
13	3.461	7.68e-10	1.848e-11
14	3.405	2.42e-09	1.726e-11
15	3.331	8.01e-10	1.804e-11
16	3.246	7.79e-10	4.153e-11
17	3.047	7.77e-10	3.387e-12
18	2.874	7.78e-10	2.930e-12
19	2.048	3.19e-09	1.830e-10
20	1.732	2.58e-09	1.043e-11
21	1.613	6.46e-10	3.538e-12
22	1.581	6.95e-10	5.967e-12
23	1.480	7.46e-10	5.890e-13
24	1.468	7.48e-10	4.020e-13
25	1.459	7.62e-10	9.609e-14
26	1.425	7.73e-10	1.386e-12
27	1.281	7.58e-10	9.094e-14
28	1.215	6.46e-10	2.048e-12
29	1.193	6.75e-10	2.344e-12

Peak name	F2 [ppm]	D [m2/s]	error
30	1.155	7.55e-10	2.651e-12
31	0.991	1.21e-09	9.145e-12
32	0.959	8.10e-10	7.224e-13
33	0.893	1.70e-09	1.838e-11
34	0.853	3.89e-09	1.161e-11
35	0.701	7.90e-10	3.029e-12
36	0.114	1.25e-10	5.188e-13

Current fit display

