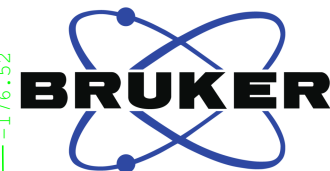


F19\_u01\_None (C:\7001) tds 28

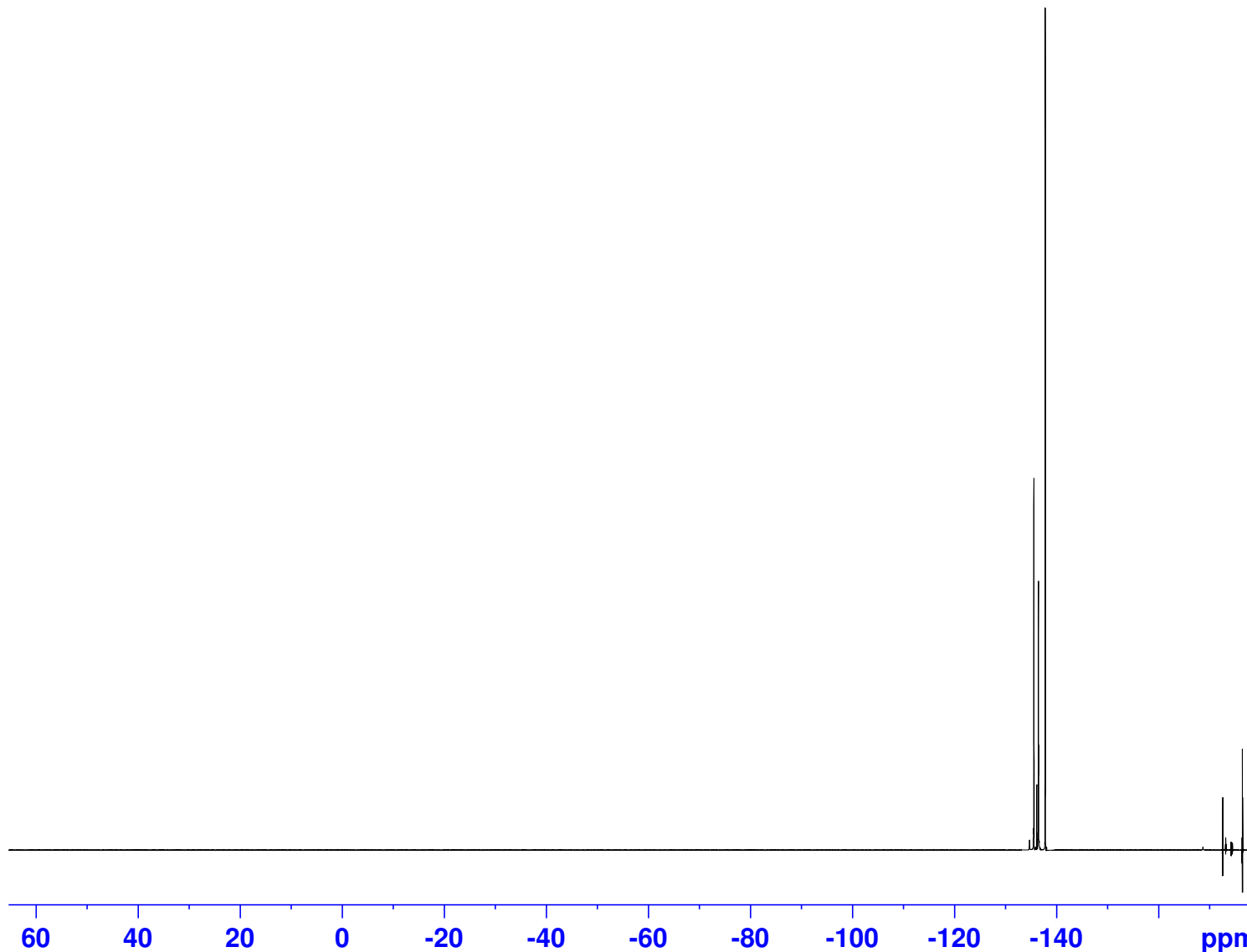
-134.7  
-135.52  
-135.52  
-135.55  
-135.55  
-135.61  
-135.62  
-135.62  
-135.6  
-135.6  
-135.9  
-135.92  
-136.16  
-136.16  
-136.18  
-136.2  
-136.22  
-136.22  
-136.41  
-136.42  
-136.44  
-136.44  
-136.51  
-136.51  
-136.54  
-136.62  
-136.64  
-136.65  
-136.67  
-136.73  
-137.71  
-137.73  
-137.74  
-137.75  
-137.81  
-137.83  
-137.84  
-137.86  
-137.90  
-138.11  
-168.74  
-172.57  
-172.58  
-172.60  
-172.61  
-172.62  
-172.64  
-172.65  
-173.17  
-173.17  
-173.20  
-173.21  
-173.22  
-173.24  
-174.24  
-174.28  
-174.31  
-174.49  
-174.52  
-174.56  
-176.44  
-176.45  
-176.47  
-176.48  
-176.49  
-176.51  
-176.52



Current Data Parameters  
NAME RP611  
EXPNO 12  
PROCNO 1

F2 - Acquisition Parameters  
Date\_ 20250108  
Time 22.52 h  
INSTRUM AVNEO700  
PROBHD Z154039\_0001 (  
PULPROG zg30  
TD 262144  
SOLVENT None  
NS 16  
DS 4  
SWH 161290.328 Hz  
FIDRES 1.230548 Hz  
AQ 0.8126464 sec  
RG 101  
DW 3.100 usec  
DE 18.00 usec  
TE 298.0 K  
D1 5.00000000 sec  
TD0 1  
SFO1 658.9498438 MHz  
NUC1 19F  
P0 7.17 usec  
P1 21.50 usec  
PLW1 12.58899975 W

F2 - Processing parameters  
SI 262144  
SF 658.9874060 MHz  
WDW EM  
SSB 0  
LB 0.30 Hz  
GB 0  
PC 1.00



9.52

0.46

0.02