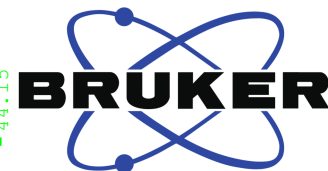


C13CPD.ucl CDC13 {C:\700} tds 24

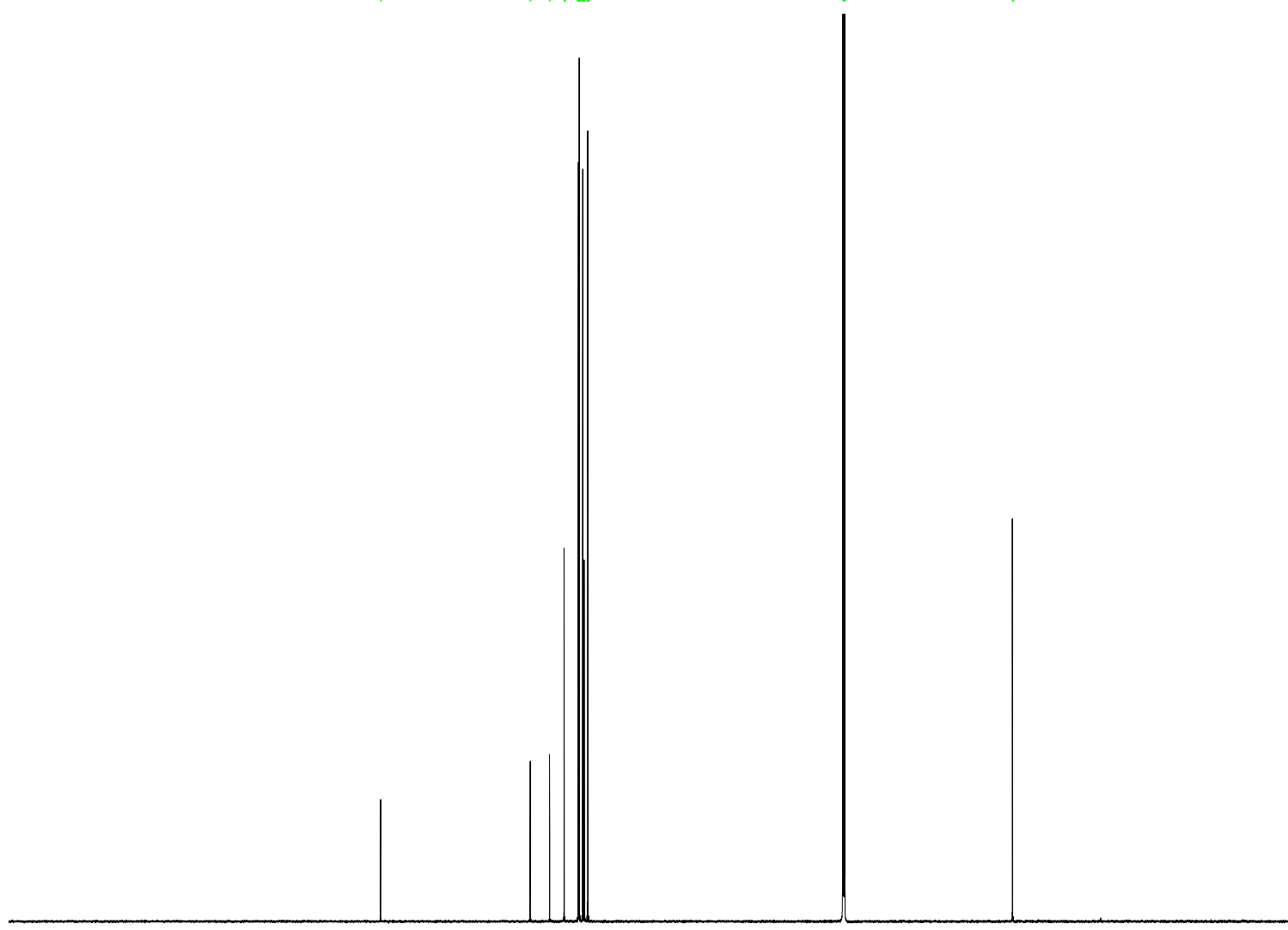
167.48
138.31
134.52
131.70
131.53
129.10
129.02
129.00
128.99
128.98
128.96
128.94
128.90
128.89
128.87
128.86
128.84
128.82
128.81
128.81
128.79
128.78
128.76
128.74
128.72
128.70
128.69
128.68
128.67
128.66
128.65
128.63
128.58
128.56
128.52
128.22
128.18
128.14
128.12
128.11
128.09
128.07
128.05
128.03
128.02
128.01
127.99
127.96
127.89
127.86
127.84
127.82
127.78
127.24
127.22
127.15
127.14
127.11
127.09
127.05
127.04
126.90
77.35
77.16
76.98
44.28
44.15



Current Data Parameters
NAME RP298 char
EXPNO 11
PROCNO 1

F2 - Acquisition Parameters
Date_ 20230530
Time 23.39 h
INSTRUM AVNEO700
PROBHD Z154039_0001 (
PULPROG zgpg30
TD 74190
SOLVENT CDC13
NS 1024
DS 4
SWH 47169.812 Hz
FIDRES 1.271595 Hz
AQ 0.7864140 sec
RG 101
DW 10.600 usec
DE 18.05 usec
TE 298.1 K
D1 2.00000000 sec
D11 0.03000000 sec
TD0 1
SFO1 176.1242799 MHz
NUC1 13C
P0 3.57 usec
P1 10.70 usec
PLW1 37.20000076 W
SFO2 700.3528014 MHz
NUC2 1H
CPDPRG[2] waltz65
PCPD2 65.00 usec
PLW2 11.00000000 W
PLW12 0.39388999 W
PLW13 0.19834000 W

F2 - Processing parameters
SI 65536
SF 176.1031267 MHz
WDW EM
SSB 0
LB 1.00 Hz
GB 0
PC 1.40



220 200 180 160 140 120 100 80 60 40 20 ppm