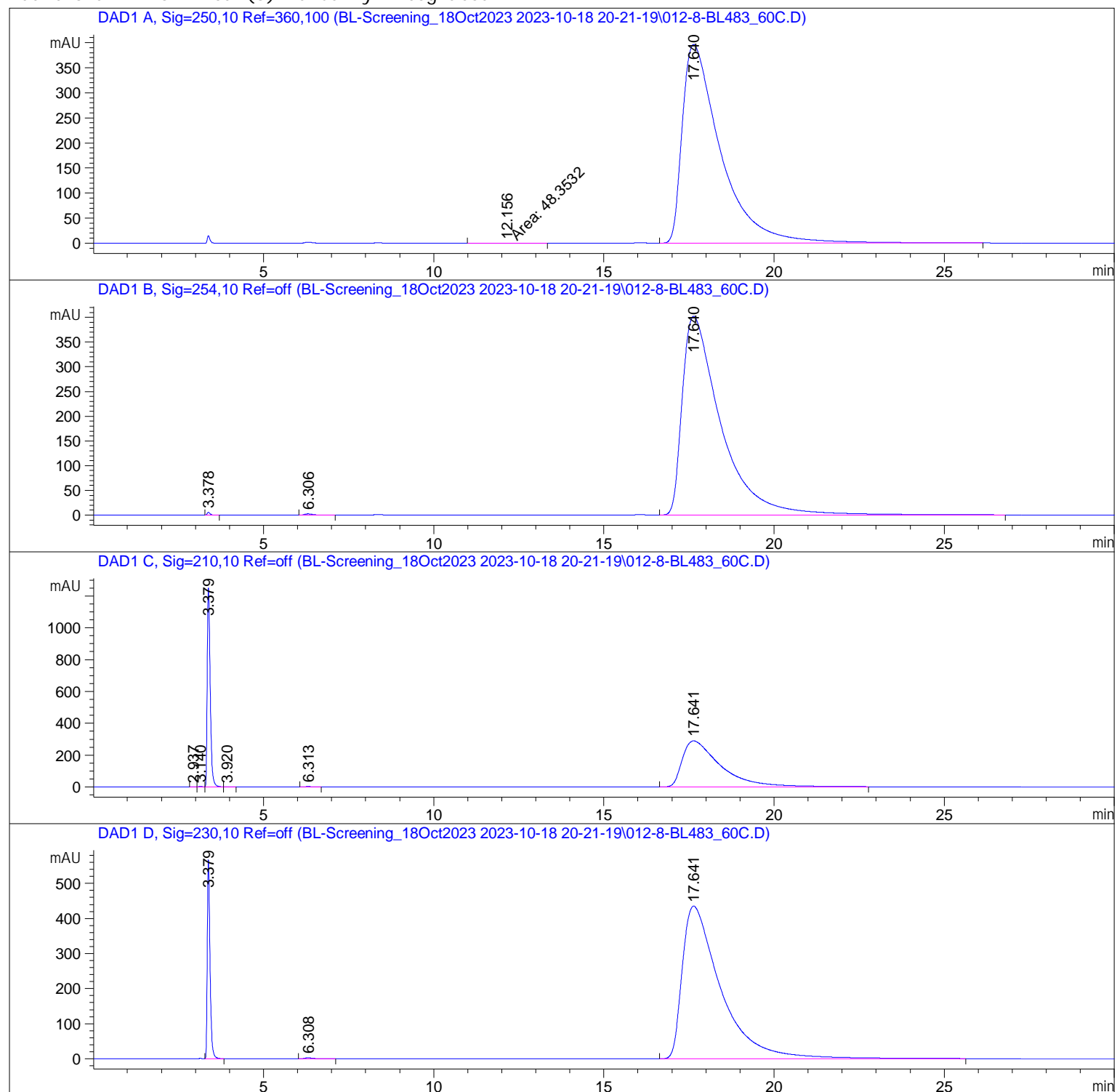


Sample Name: BL483_60C

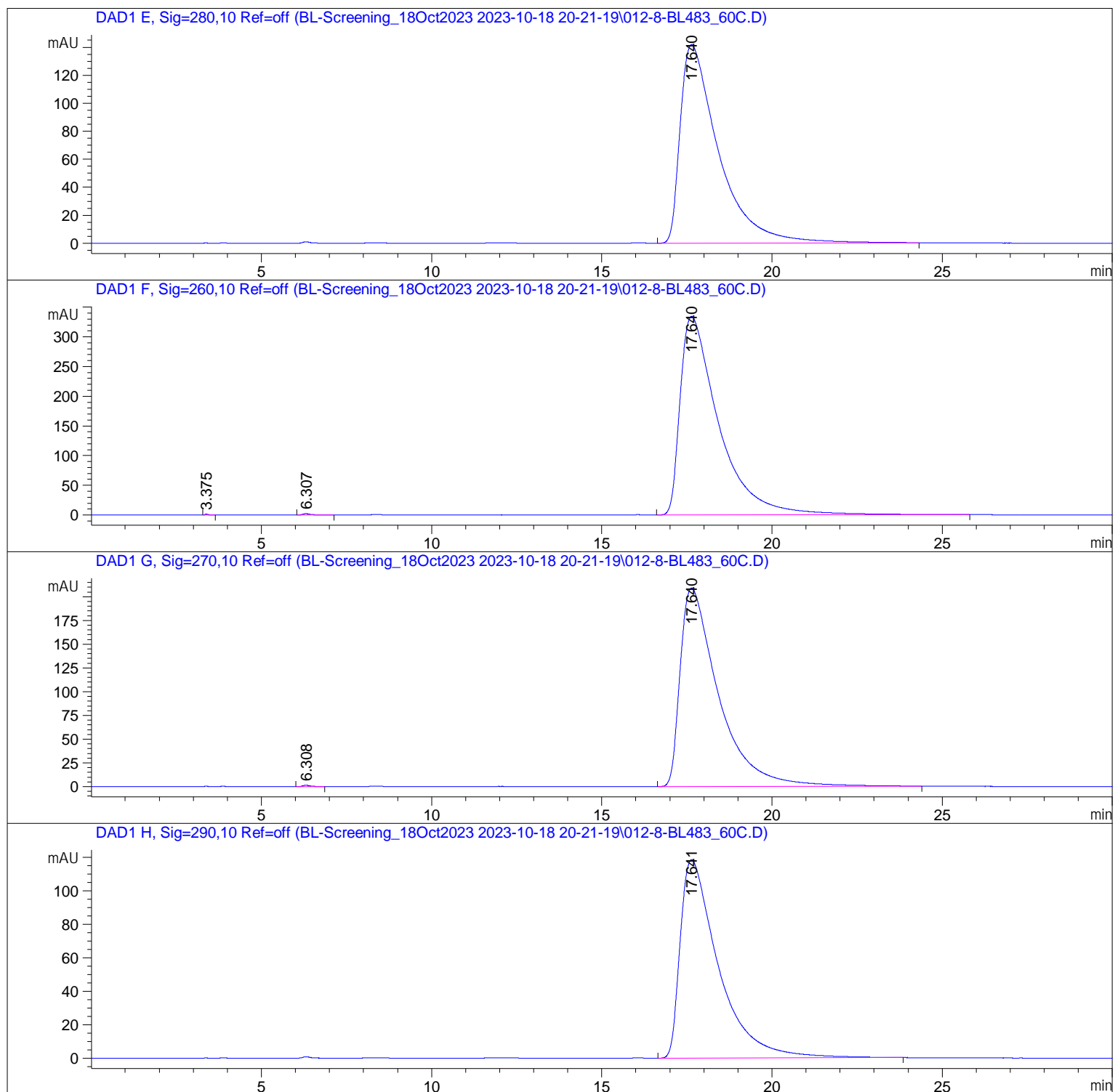
=====

Acq. Operator	: Prof. Alan Spivey	Seq. Line	: 12
Sample Operator	: Prof. Alan Spivey		
Acq. Instrument	: 1260 LC	Location	: 8
Injection Date	: 19/10/2023 01:58:11	Inj	: 1
		Inj Volume	: 1.000 µl
Method	: C:\Users\Public\Documents\ChemStation\1\Data\BL-Screening_18Oct2023 2023-10-18 20-21-19\IB_30%IPA_70%HEX_30MIN.M (Sequence Method)		
Last changed	: 18/10/2023 19:55:45 by Prof. Alan Spivey		
Sample Info	: Operator-Mahesh; BL483_60C; Chiral HPLC of enantioenriched BINOL-Phen-DIOL; Analytical; 5 µm, Column Size: 0.46 cm I.D. x 25 cm L; Column Chiralpak-IB; Temp: 30 degree Celcius; UV wavelength: 250 nm; Flow Rate: 1 ml/min; Injection: 1 microlitre; Solvent: n-Hexane/Isopropanol = 70:30; Pressure: 42 bar; Sample Conc. 4 mg/ml in Isopropanol/EtOAc (2:1).		

Additional Info : Peak(s) manually integrated



Sample Name: BL483_60C

=====
Area Percent Report
=====

Sorted By : Signal
Multiplier : 1.0000
Dilution : 1.0000
Do not use Multiplier & Dilution Factor with ISTDs

Signal 1: DAD1 A, Sig=250, 10 Ref=360, 100

Peak #	RetTime [min]	Type	Width [min]	Area [mAU*s]	Height [mAU]	Area %
1	12.156	MM	1.4340	48.35320	5.61984e-1	0.1552
2	17.640	BB	1.1438	3.11161e4	396.40845	99.8448

Totals : 3.11645e4 396.97043

Signal 2: DAD1 B, Sig=254, 10 Ref=off

Peak #	RetTime [min]	Type	Width [min]	Area [mAU*s]	Height [mAU]	Area %
1	3.378	BB	0.0821	30.39455	5.53618	0.0959
2	6.306	BB	0.2297	38.58433	2.45001	0.1218
3	17.640	BB	1.1512	3.16151e4	402.13919	99.7823

Totals : 3.16841e4 410.12538

Signal 3: DAD1 C, Sig=210, 10 Ref=off

Peak #	RetTime [min]	Type	Width [min]	Area [mAU*s]	Height [mAU]	Area %
1	2.937	BV	0.1192	10.39643	1.35987	0.0346
2	3.140	VV	0.1009	26.61073	3.83836	0.0886
3	3.379	VV	0.0916	7487.66504	1254.68372	24.9193
4	3.920	VB	0.1862	12.78289	1.02028	0.0425
5	6.313	BB	0.2148	29.02079	1.95933	0.0966
6	17.641	BB	1.1183	2.24811e4	289.38608	74.8184

Totals : 3.00476e4 1552.24764

Signal 4: DAD1 D, Sig=230, 10 Ref=off

Peak #	RetTime [min]	Type	Width [min]	Area [mAU*s]	Height [mAU]	Area %
1	3.379	BB	0.0815	3097.91943	569.09833	8.3011
2	6.308	BB	0.2364	40.76214	2.60653	0.1092
3	17.641	BB	1.1457	3.41809e4	435.50140	91.5897

Totals : 3.73195e4 1007.20626

Signal 5: DAD1 E, Sig=280, 10 Ref=off

Peak #	RetTime [min]	Type	Width [min]	Area [mAU*s]	Height [mAU]	Area %
1	17.640	BB	1.1394	1.10796e4	141.82597	100.0000

Totals : 1.10796e4 141.82597

Signal 6: DAD1 F, Sig=260, 10 Ref=off

Peak #	RetTime [min]	Type	Width [min]	Area [mAU*s]	Height [mAU]	Area %
1	3.375	BB	0.0823	8.33340	1.51181	0.0317
2	6.307	BB	0.2264	34.31187	2.19486	0.1305
3	17.640	BB	1.1417	2.62589e4	334.54596	99.8379

Totals : 2.63015e4 338.25262

Signal 7: DAD1 G, Sig=270, 10 Ref=off

Peak #	RetTime [min]	Type	Width [min]	Area [mAU*s]	Height [mAU]	Area %
1	6.308	BB	0.2127	21.00706	1.41913	0.1283
2	17.640	BB	1.1319	1.63495e4	209.18027	99.8717

Totals : 1.63705e4 210.59939

Signal 8: DAD1 H, Sig=290, 10 Ref=off

Peak #	RetTime [min]	Type	Width [min]	Area [mAU*s]	Height [mAU]	Area %
1	17.641	BB	1.1287	9230.73438	118.50828	100.0000

Totals : 9230.73438 118.50828

*** End of Report ***