

=====

Acq. Operator : SYSTEM	Seq. Line : 2
Sample Operator : SYSTEM	
Acq. Instrument : 1260 LC	Location : 15
Injection Date : 31/07/2023 18:24:08	Inj : 1
	Inj Volume : 1.000 µl

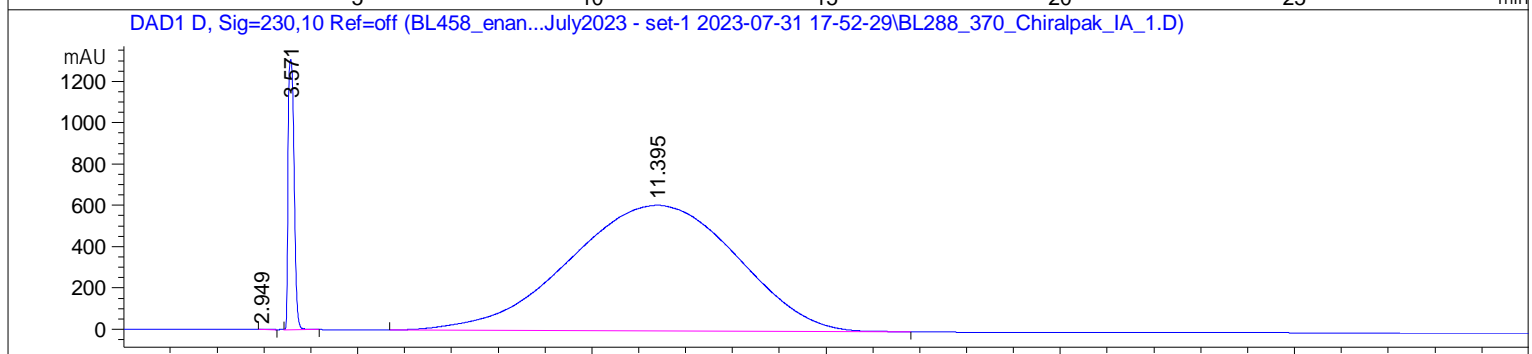
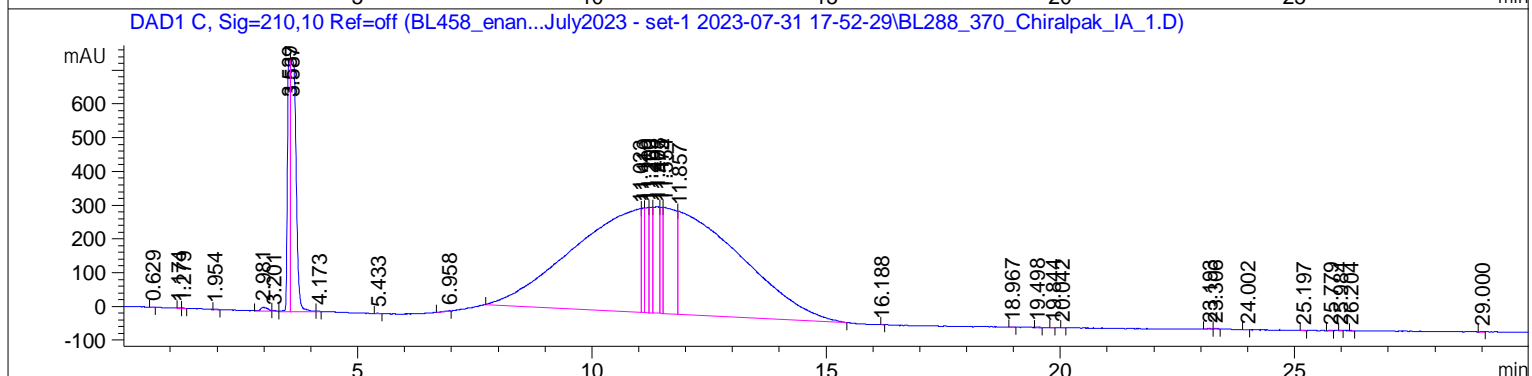
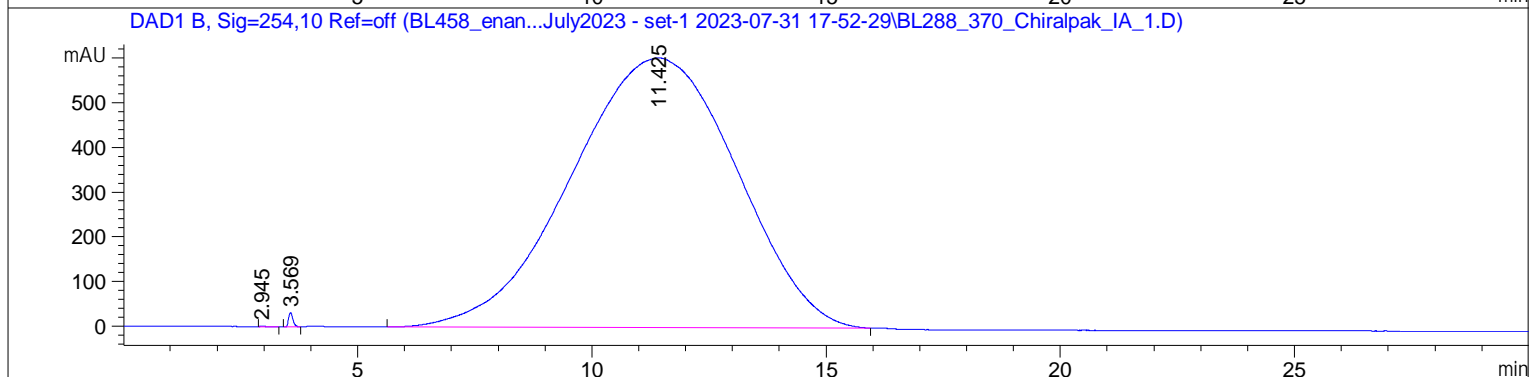
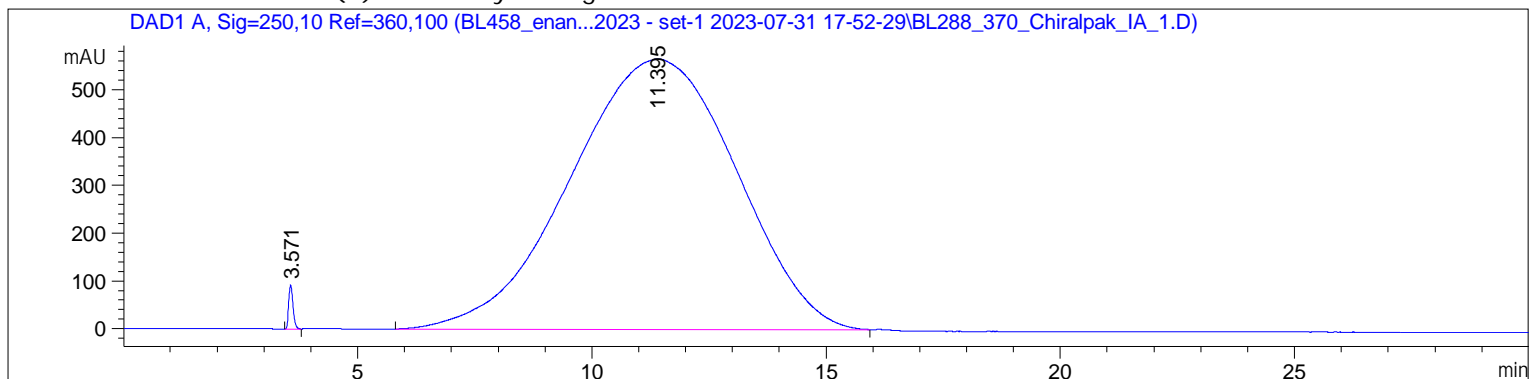
Different Inj Volume from Sample Entry! Actual Inj Volume : 5.000 µl

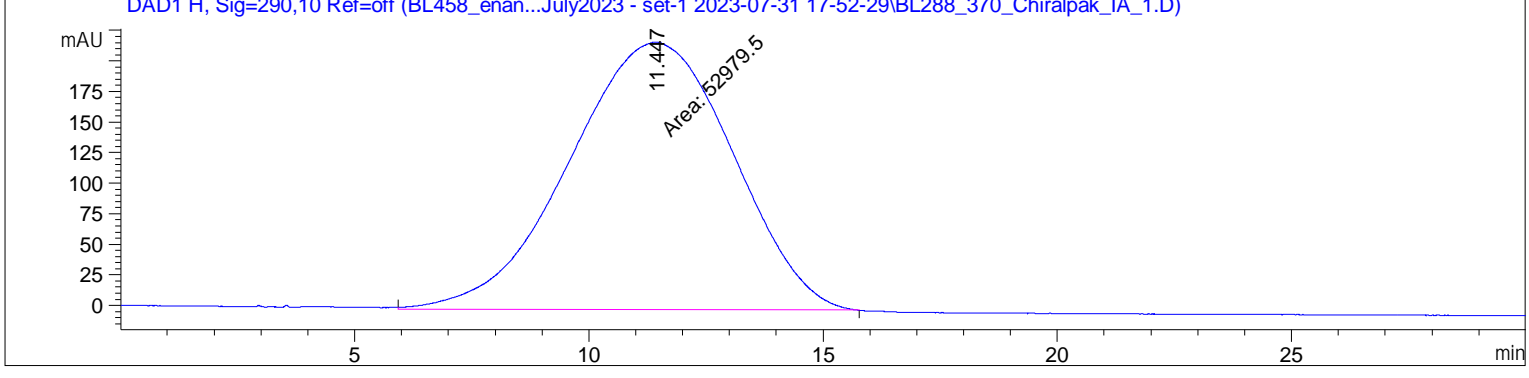
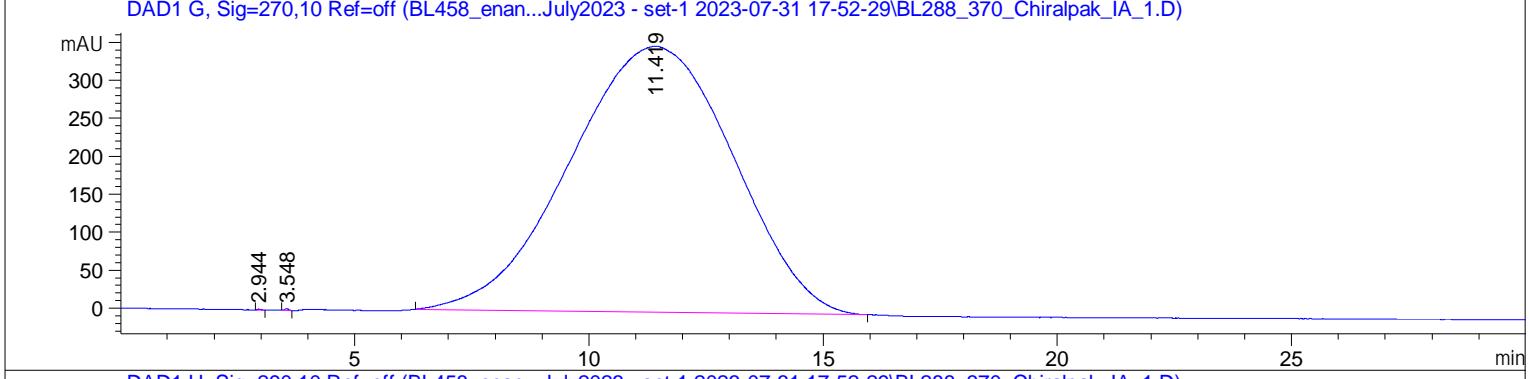
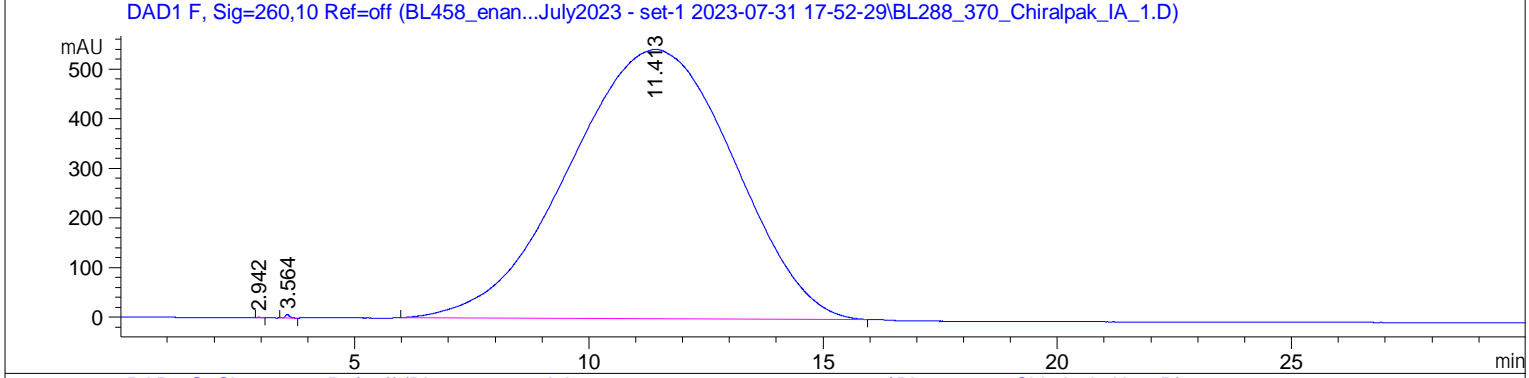
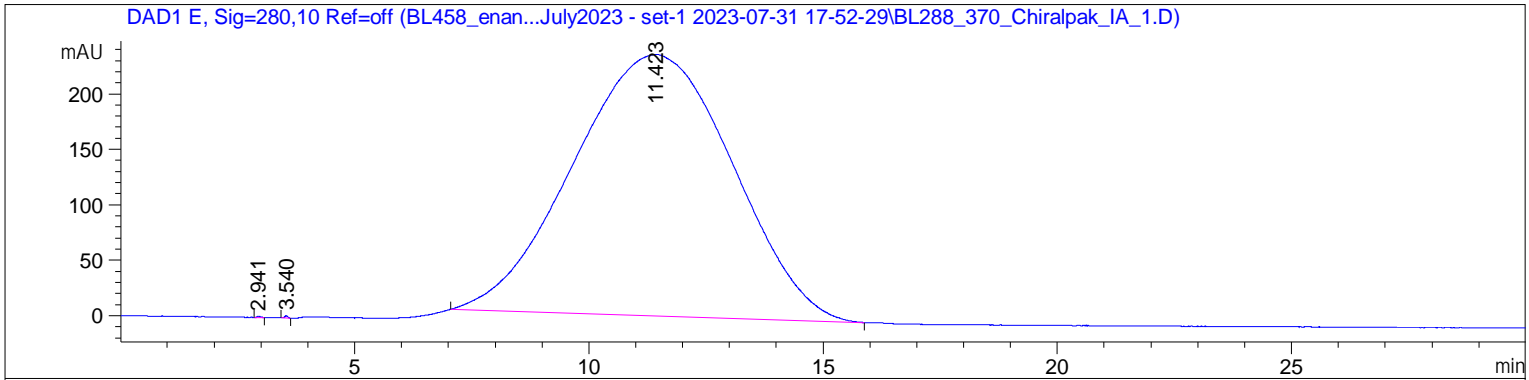
Method : C:\Users\Public\Documents\ChemStation\1\Data\BL458_enantiomer_31July2023 - set-1 2023-07-31 17-52-29\IA_10%IPA_90%HEX_30MIN.M (Sequence Method)

Last changed : 15/12/2022 17:49:21 by SYSTEM

Sample Info : BL288+370; Chiral HPLC of racemic of BINOL-DiPhenan-DiMOM; Analytical; 5 µm, Column Size: 0.46 cm I.D. x 25 cmL; Column Chiralpak-IA; Temp: 30 degree Celcius; UV wavelength: 250 nm; Flow Rate: 1 ml/min; Injection: 5 microlitres; Solvent: n-Hexane/Isopropanol = 90:10; Pressure: 42 bar; Sample Conc. 3 mg/ml in 0.6 mL of Isopropanol/EtOAc (2:1)

Additional Info : Peak(s) manually integrated





=====
Area Percent Report
=====

Sorted By : Signal
Multiplier : 1.0000
Dilution : 1.0000
Do not use Multiplier & Dilution Factor with ISTDs

Signal 1: DAD1 A, Sig=250, 10 Ref=360, 100

Peak #	RetTime [min]	Type	Width [min]	Area [mAU*s]	Height [mAU]	Area %
1	3.571	BB	0.1032	590.73352	91.67857	0.4227
2	11.395	BB	2.8759	1.39155e5	565.69592	99.5773

Totals : 1.39746e5 657.37450

Signal 2: DAD1 B, Sig=254, 10 Ref=off

Peak #	RetTime [min]	Type	Width [min]	Area [mAU*s]	Height [mAU]	Area %
1	2.945	BB	0.0889	9.68437	1.50800	6.527e-3
2	3.569	BB	0.1009	204.84734	31.89777	0.1381
3	11.425	BB	2.8862	1.48154e5	603.47290	99.8554

Totals : 1.48369e5 636.87867

Signal 3: DAD1 C, Sig=210, 10 Ref=off

Peak #	RetTime [min]	Type	Width [min]	Area [mAU*s]	Height [mAU]	Area %
1	0.629	BV	0.0685	6.56137	1.30742	7.805e-3
2	1.174	VV	0.0636	6.76139	1.47254	8.043e-3
3	1.279	VB	0.0486	6.59720	1.99436	7.847e-3
4	1.954	BB	0.0742	7.23342	1.35771	8.604e-3
5	2.981	BV	0.1539	116.64967	10.63646	0.1388
6	3.201	VB	0.0752	18.86135	3.18129	0.0224
7	3.539	BV	0.0685	3368.91553	749.28302	4.0073
8	3.587	VV	0.1235	5862.48730	747.70239	6.9734
9	4.173	VB	0.0673	7.00089	1.47645	8.327e-3
10	5.433	VV	0.0769	7.77502	1.39821	9.248e-3
11	6.958	BB	0.1290	14.05027	1.42565	0.0167
12	11.023	BV	1.1688	3.05836e4	306.86386	36.3789
13	11.110	VV	0.0617	1311.30908	309.15988	1.5598
14	11.200	VV	0.0779	1787.20386	311.29193	2.1259
15	11.263	VV	0.0667	1626.11035	312.52890	1.9342
16	11.403	VV	0.1176	2850.72510	314.80295	3.3909
17	11.475	VV	0.0529	1261.91309	314.23999	1.5010
18	11.554	VV	0.2296	5744.25586	313.71866	6.8327
19	11.857	VB	1.1390	2.93951e4	304.84485	34.9651
20	16.188	VV	0.0556	5.18534	1.32800	6.168e-3
21	18.967	BV	0.0726	6.30253	1.10388	7.497e-3
22	19.498	VB	0.0844	7.31921	1.17863	8.706e-3
23	19.844	VV	0.0660	5.32111	1.14980	6.329e-3
24	20.042	VV	0.0589	6.04216	1.38396	7.187e-3
25	23.193	VV	0.0988	12.29796	1.54561	0.0146
26	23.306	VV	0.0823	10.01488	1.57213	0.0119

Peak #	RetTime [min]	Type	Width [min]	Area [mAU*s]	Height [mAU]	Area %
27	24.002	BV	0.0747	5.70378	1.02792	6.785e-3
28	25.197	VB	0.0658	6.13383	1.23722	7.296e-3
29	25.779	BB	0.0579	5.28967	1.18870	6.292e-3
30	25.984	VV	0.0716	5.23141	1.02430	6.223e-3
31	26.204	VB	0.0548	5.43025	1.48031	6.459e-3
32	29.000	BV	0.0823	6.32737	1.08110	7.526e-3

Totals : 8.40697e4 4024.98809

Signal 4: DAD1 D, Sig=230, 10 Ref=off

Peak #	RetTime [min]	Type	Width [min]	Area [mAU*s]	Height [mAU]	Area %
1	2.949	VB	0.1221	25.80001	2.73489	0.0158
2	3.571	VB	0.1457	1.16193e4	1307.28296	7.0992
3	11.395	BV	2.9175	1.52024e5	609.17188	92.8850

Totals : 1.63669e5 1919.18972

Signal 5: DAD1 E, Sig=280, 10 Ref=off

Peak #	RetTime [min]	Type	Width [min]	Area [mAU*s]	Height [mAU]	Area %
1	2.941	BB	0.0757	6.70242	1.26769	0.0120
2	3.540	BB	0.0800	9.90458	1.99162	0.0178
3	11.423	BB	2.7656	5.56535e4	235.62193	99.9702

Totals : 5.56701e4 238.88124

Signal 6: DAD1 F, Sig=260, 10 Ref=off

Peak #	RetTime [min]	Type	Width [min]	Area [mAU*s]	Height [mAU]	Area %
1	2.942	BB	0.0795	7.21712	1.28476	5.434e-3
2	3.564	BB	0.1005	44.06834	6.90212	0.0332
3	11.413	BB	2.8646	1.32760e5	543.35669	99.9614

Totals : 1.32811e5 551.54357

Signal 7: DAD1 G, Sig=270, 10 Ref=off

Peak #	RetTime [min]	Type	Width [min]	Area [mAU*s]	Height [mAU]	Area %
1	2.944	BB	0.0708	5.64232	1.11858	6.641e-3
2	3.548	BB	0.0841	11.24449	2.18416	0.0132
3	11.419	BB	2.8408	8.49453e4	350.33936	99.9801

Totals : 8.49622e4 353.64209

Signal 8: DAD1 H, Sig=290, 10 Ref=off

Peak #	RetTime [min]	Type	Width [min]	Area [mAU*s]	Height [mAU]	Area %
1	11.447	MM	4.0378	5.29795e4	218.68335	100.0000

Totals : 5.29795e4 218.68335

=====
*** End of Report ***