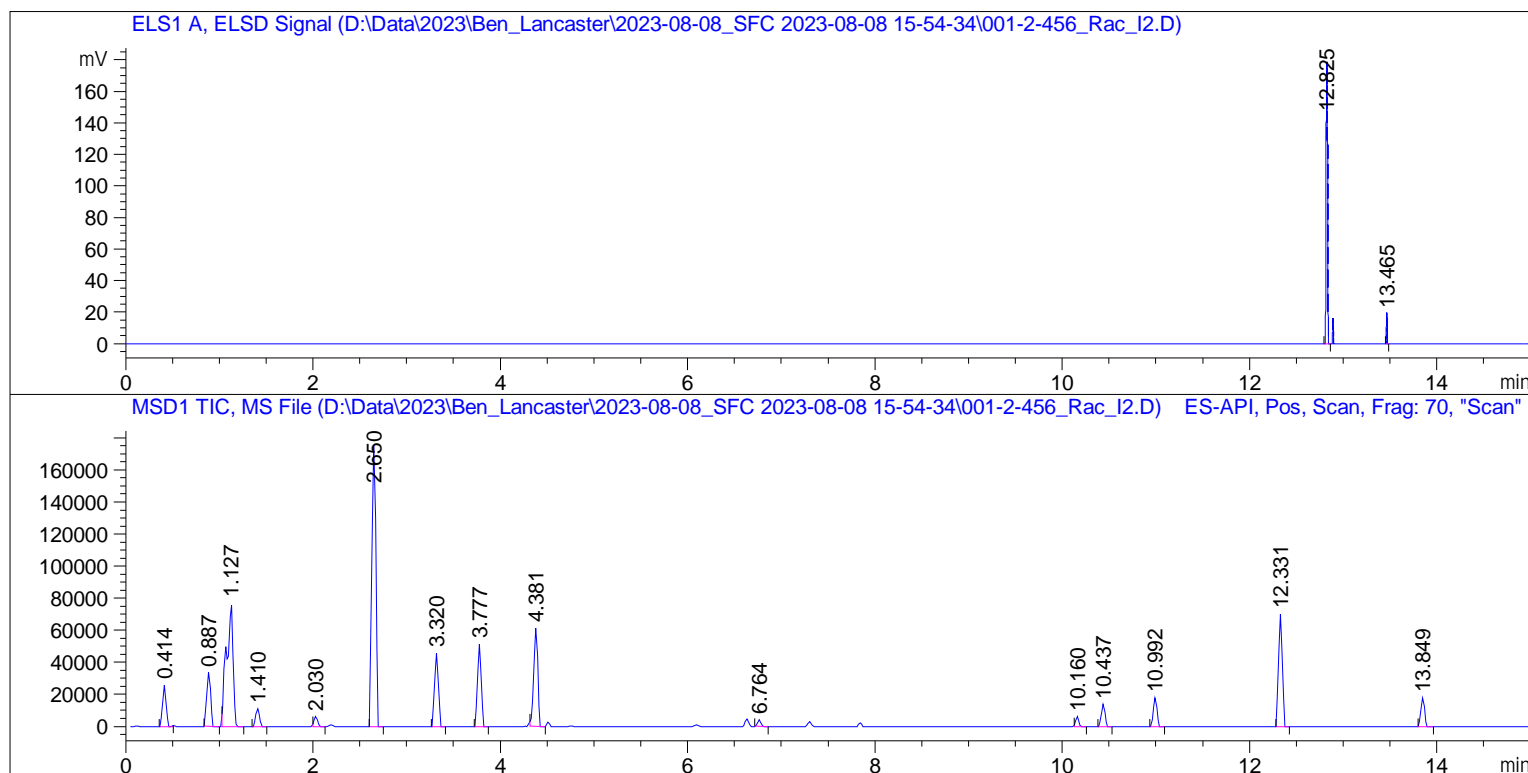


Sample Name: 456_Rac_I 2



=====
 Area Percent Report
 =====

Sorted By : Signal
 Multiplier : 1.0000
 Dilution : 1.0000
 Use Multiplier & Dilution Factor with ISTDs

Signal 1: DAD1 A, Sig=250, 4 Ref=360, 100

Peak #	RetTime [min]	Type	Width [min]	Area [mAU*s]	Height [mAU]	Area %
1	0.938	BV	0.0265	9.91546	5.65570	0.1746
2	0.996	VV	0.0449	35.06499	11.09665	0.6175
3	1.361	VB	0.0593	8.35416	2.15004	0.1471
4	12.239	BV	0.2401	2809.91309	184.05130	49.4841
5	12.854	VB	0.2543	2815.16479	174.43889	49.5766

Totals : 5678.41250 377.39258

Signal 2: DAD1 B, Sig=280, 4 Ref=360, 100

Peak #	RetTime [min]	Type	Width [min]	Area [mAU*s]	Height [mAU]	Area %
1	12.239	BV	0.2397	827.06702	54.30960	49.9738
2	12.854	VB	0.2497	827.93561	51.46680	50.0262

Totals : 1655.00262 105.77639

Signal 3: DAD1 C, Sig=210, 4 Ref=360, 100

Peak #	RetTime [min]	Type	Width [min]	Area [mAU*s]	Height [mAU]	Area %
1	0.942	BV	0.0665	154.27408	29.58495	1.0070
2	1.010	VV	0.0550	5265.89648	1499.85803	34.3707
3	1.493	VV	0.2093	485.06281	33.83164	3.1660
4	1.798	VB	0.2274	459.62045	25.60905	3.0000
5	2.571	BB	0.1717	15.21479	1.18572	0.0993
6	6.571	BV	0.2574	47.48460	2.35375	0.3099
7	6.962	VV	0.2447	42.05404	2.12714	0.2745
8	10.065	BV	0.1795	17.19295	1.22706	0.1122
9	12.239	BV	0.2399	4384.83398	287.59128	28.6200
10	12.854	VV	0.2509	4415.76855	272.77374	28.8219
11	13.378	VB	0.1984	23.22343	1.59024	0.1516
12	14.130	BB	0.1184	10.26639	1.12594	0.0670

Totals : 1.53209e4 2158.85855

Signal 4: DAD1 D, Sig=230, 4 Ref=360, 100

Peak #	RetTime [min]	Type	Width [min]	Area [mAU*s]	Height [mAU]	Area %
1	0.937	BV	0.0236	9.61290	6.36059	0.0646
2	1.010	VV	0.0501	1549.63440	501.14059	10.4088
3	1.360	BB	0.0580	9.33117	2.47140	0.0627
4	12.239	BV	0.2398	6654.15039	436.54678	44.6956
5	12.854	VB	0.2541	6664.99414	413.41840	44.7684

Totals : 1.48877e4 1359.93777

Signal 5: ELS1 A, ELSD Signal

Peak #	RetTime [min]	Type	Width [min]	Area [mV*s]	Height [mV]	Area %
1	12.825	BB	0.0191	200.28882	177.86412	95.4294
2	13.465	BB	8.91e-3	9.59293	18.95073	4.5706

Totals : 209.88174 196.81485

Signal 6: MSD1 TIC, MS File

Peak #	RetTime [min]	Type	Width [min]	Area	Height	Area %
1	0.414	BB	0.0462	6.92319e4	2.56232e4	3.5873
2	0.887	BB	0.0480	9.62080e4	3.36551e4	4.9850
3	1.127	BB	0.0715	3.77059e5	7.74385e4	19.5373
4	1.410	BB	0.0480	3.18240e4	1.11335e4	1.6490
5	2.030	BB	0.0458	1.60756e4	6037.00000	0.8330
6	2.650	BB	0.0492	5.19592e5	1.75754e5	26.9227
7	3.320	BB	0.0488	1.33654e5	4.56790e4	6.9253
8	3.777	BB	0.0478	1.45175e5	5.11781e4	7.5222
9	4.381	BB	0.0492	1.80773e5	6.11339e4	9.3668
10	6.764	BB	0.0433	1.06625e4	4347.86328	0.5525
11	10.160	BB	0.0406	1.33555e4	6022.00049	0.6920
12	10.437	BB	0.0454	3.58340e4	1.36350e4	1.8567
13	10.992	BB	0.0472	4.93834e4	1.77270e4	2.5588
14	12.331	BB	0.0486	2.03947e5	7.01420e4	10.5675
15	13.849	BB	0.0453	4.71665e4	1.79622e4	2.4439

Totals : 1.92994e6 6.17468e5

=====
*** End of Report ***