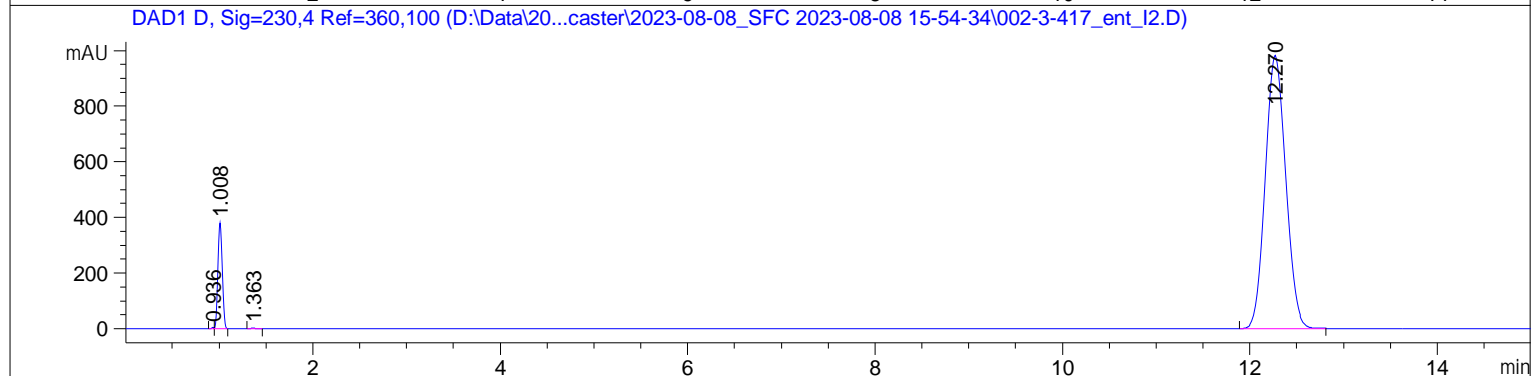
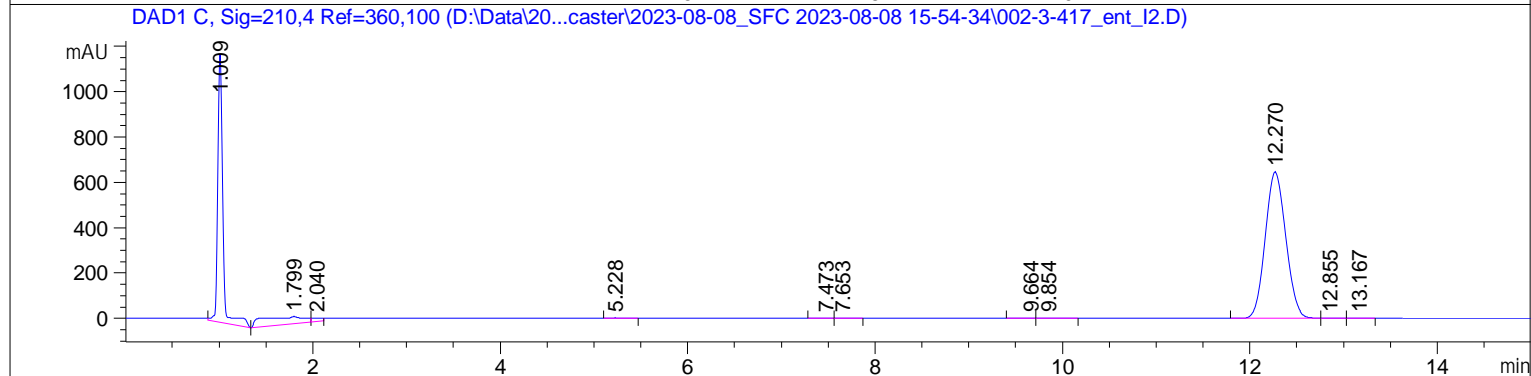
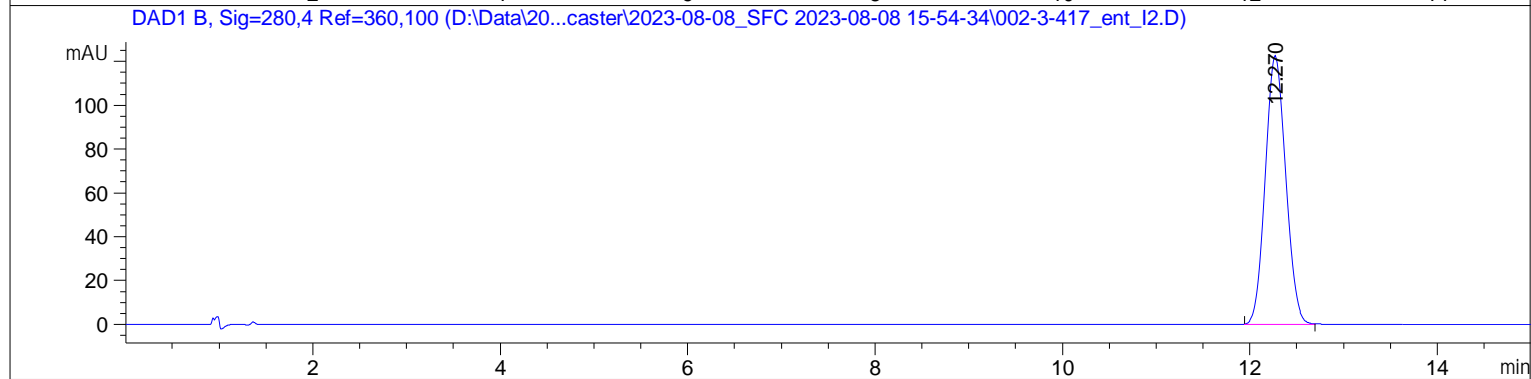
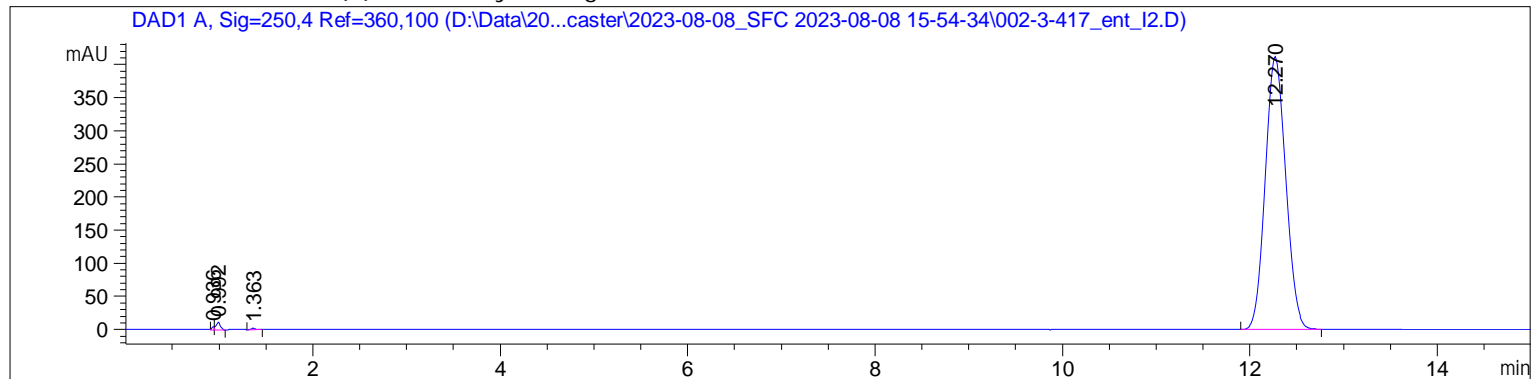
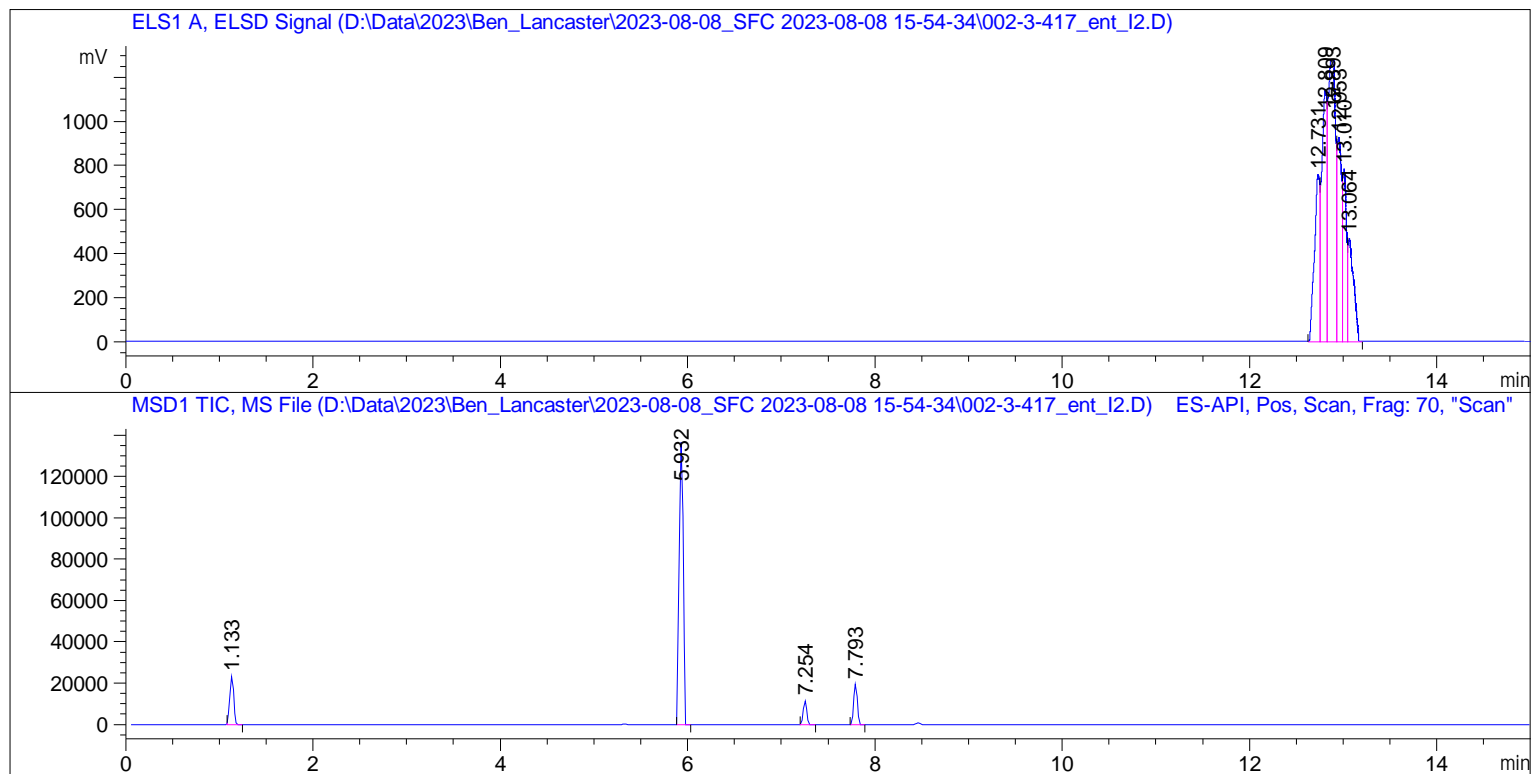


=====

Acq. Operator	: administrator	Seq. Line	: 2
Sample Operator	: administrator		
Acq. Instrument	: SFC LCMS	Location	: 3
Injection Date	: 08/08/2023 16:11:42	Inj	: 1
		Inj Volume	: 2.500 µl
Acq. Method	: D:\Data\2023\Ben_Lancaster\2023-08-08_SFC 2023-08-08 15-54-34\7_5%IPA 3ML 15MIN 50C 90BAR MS_SCAN.M		
Last changed	: 08/08/2023 15:55:11 by administrator		
Analysis Method	: D:\Data\2023\Ben_Lancaster\2023-08-08_SFC 2023-08-08 15-54-34\7_5%IPA 3ML 15MIN 50C 90BAR MS_SCAN.M (Sequence Method)		
Last changed	: 08/08/2023 16:10:45 by administrator		
Additional Info	: Peak(s) manually integrated		



Sample Name: 417_ent_I2



=====
 Area Percent Report
 =====

Sorted By : Signal
 Multiplier : 1.0000
 Dilution : 1.0000
 Use Multiplier & Dilution Factor with ISTDs

Signal 1: DAD1 A, Sig=250, 4 Ref=360, 100

Peak #	RetTime [min]	Type	Width [min]	Area [mAU*s]	Height [mAU]	Area %
1	0.936	BV	0.0240	7.36989	4.80123	0.1160
2	0.992	VV	0.0439	36.12974	11.74235	0.5688
3	1.363	VB	0.0587	8.32884	2.17396	0.1311
4	12.270	BB	0.2404	6300.52686	412.12045	99.1841

Totals : 6352.35532 430.83799

Signal 2: DAD1 B, Sig=280, 4 Ref=360, 100

Peak #	RetTime [min]	Type	Width [min]	Area [mAU*s]	Height [mAU]	Area %
1	12.270	BB	0.2393	1865.30054	122.70569	100.0000

Totals : 1865.30054 122.70569

Signal 3: DAD1 C, Sig=210, 4 Ref=360, 100

Peak #	RetTime [min]	Type	Width [min]	Area [mAU*s]	Height [mAU]	Area %
1	1.009	BV	0.0573	4387.32959	1183.01965	28.1006
2	1.799	VV	0.4164	1082.55725	31.54020	6.9337
3	2.040	VV	0.1075	117.35868	14.64839	0.7517
4	5.228	BV	0.1536	20.40239	1.78151	0.1307
5	7.473	BV	0.1368	12.48643	1.29123	0.0800
6	7.653	VB	0.1373	10.23492	1.07329	0.0656
7	9.664	BV	0.1354	14.63786	1.47939	0.0938
8	9.854	VV	0.2073	29.18044	1.74320	0.1869
9	12.270	BB	0.2404	9902.20508	647.46680	63.4230
10	12.855	BV	0.1394	23.24614	2.23416	0.1489
11	13.167	VV	0.1259	13.31480	1.38875	0.0853

Totals : 1.56130e4 1887.66656

Signal 4: DAD1 D, Sig=230, 4 Ref=360, 100

Peak #	RetTime [min]	Type	Width [min]	Area [mAU*s]	Height [mAU]	Area %
1	0.936	BV	0.0225	7.51783	5.18301	0.0464
2	1.008	VV	0.0513	1213.76587	379.82651	7.4856
3	1.363	VB	0.0572	9.01264	2.43203	0.0556
4	12.270	BB	0.2399	1.49844e4	982.88641	92.4125

Totals : 1.62147e4 1370.32796

Signal 5: ELS1 A, ELSD Signal

Peak #	RetTime [min]	Type	Width [min]	Area [mV*s]	Height [mV]	Area %
1	12.731	BV	0.0577	3098.09546	757.28931	14.2048
2	12.809	VV	0.0560	4316.34961	1145.71655	19.7906
3	12.893	VV	0.0790	7030.88086	1280.83240	32.2368
4	12.953	VV	0.0458	3088.07446	927.94354	14.1589
5	13.010	VV	0.0428	2334.10522	782.60547	10.7019
6	13.064	VB	0.0565	1942.62134	467.33911	8.9070

Totals : 2.18101e4 5361.72638

Signal 6: MSD1 TIC, MS File

Peak #	RetTime [min]	Type	Width [min]	Area	Height	Area %
1	1.133	BB	0.0483	6.64502e4	2.30734e4	11.9143
2	5.932	BB	0.0496	4.07543e5	1.36343e5	73.0709
3	7.254	BB	0.0463	3.03253e4	1.11850e4	5.4372
4	7.793	BB	0.0470	5.34180e4	1.93082e4	9.5777

Totals : 5.57736e5 1.89910e5

=====
*** End of Report ***