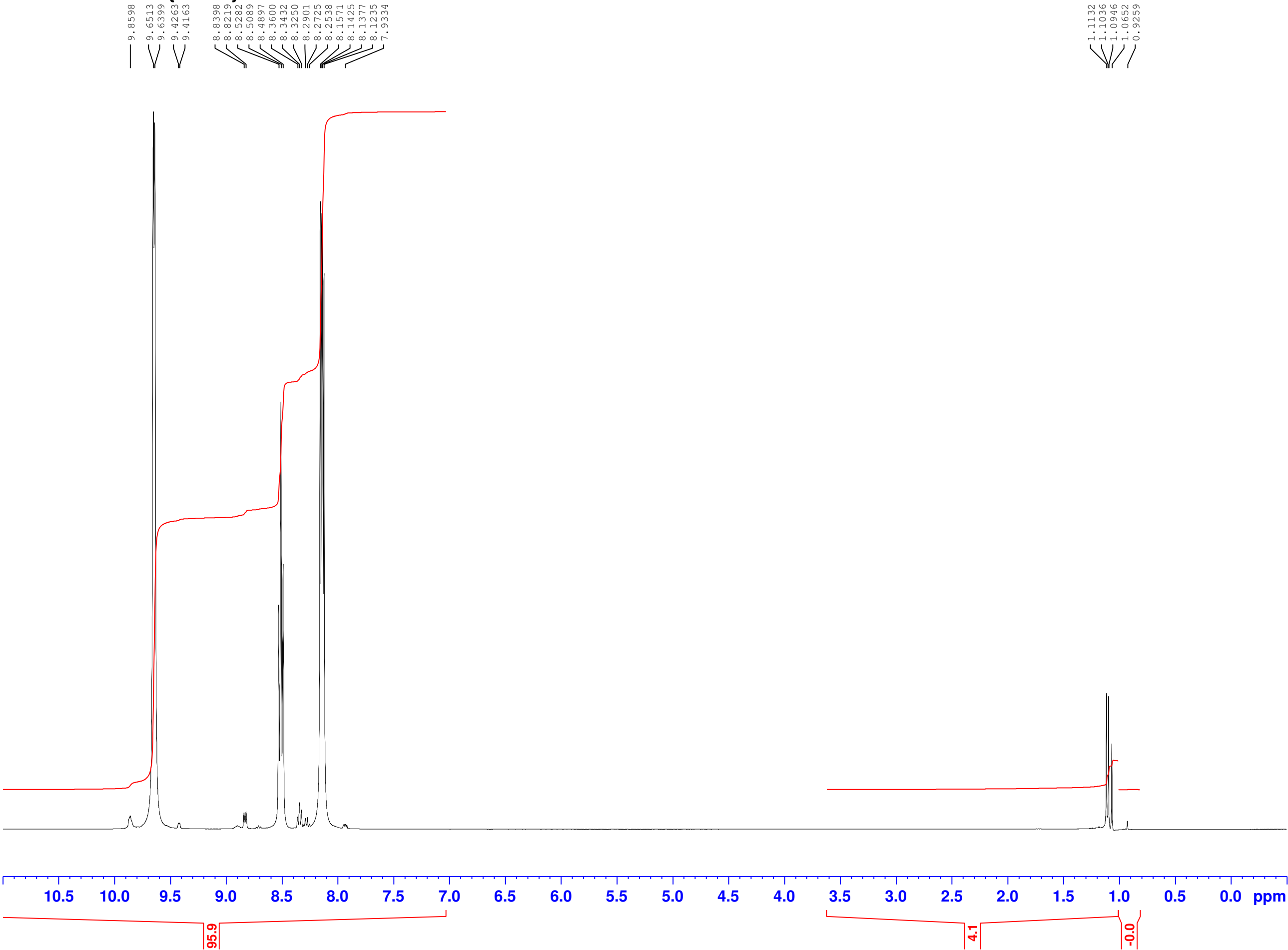


RP198 PhBF3K + TMSCl in py
PROTON.ucl None {U:\400} tds 1



Current Data Parameters
NAME RP198
EXPNO 10
PROCNO 1

F2 - Acquisition Parameters
Date_ 20220425
Time 17.11
INSTRUM av400
PROBHD 5 mm PABBO BB/
PULPROG zg30
TD 65536
SOLVENT Pyr
NS 8
DS 0
SWH 8223.685 Hz
FIDRES 0.125483 Hz
AQ 3.9845889 sec
RG 8
DW 60.800 usec
DE 17.35 usec
TE 294.6 K
D1 1.00000000 sec
TD0 1

===== CHANNEL f1 =====
SFO1 400.1024708 MHz
NUC1 1H
P1 13.45 usec
PLW1 27.00000000 W

F2 - Processing parameters
SI 32768
SF 400.1000000 MHz
WDW EM
SSB 0
LB 0.30 Hz
GB 0
PC 1.40