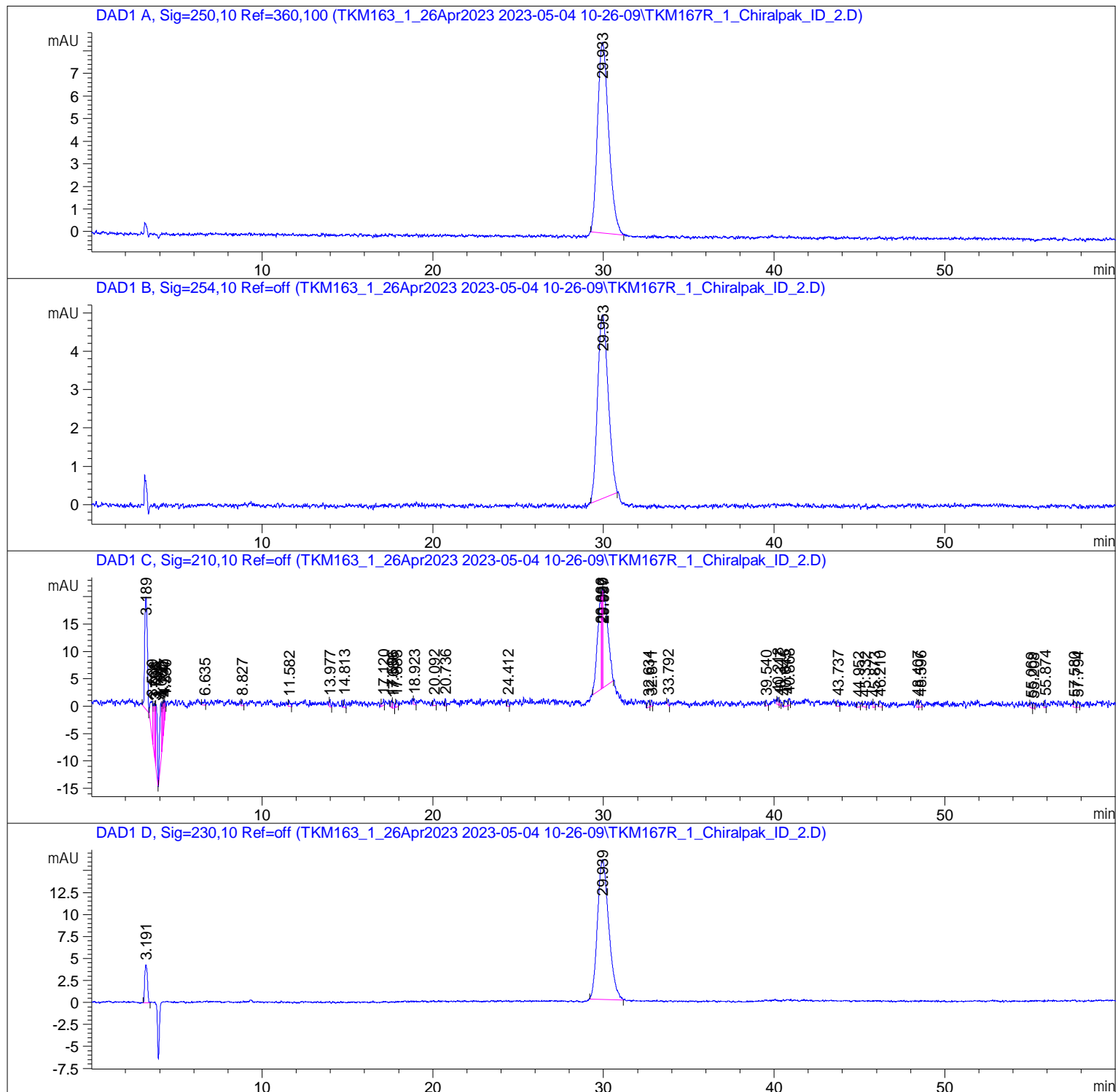
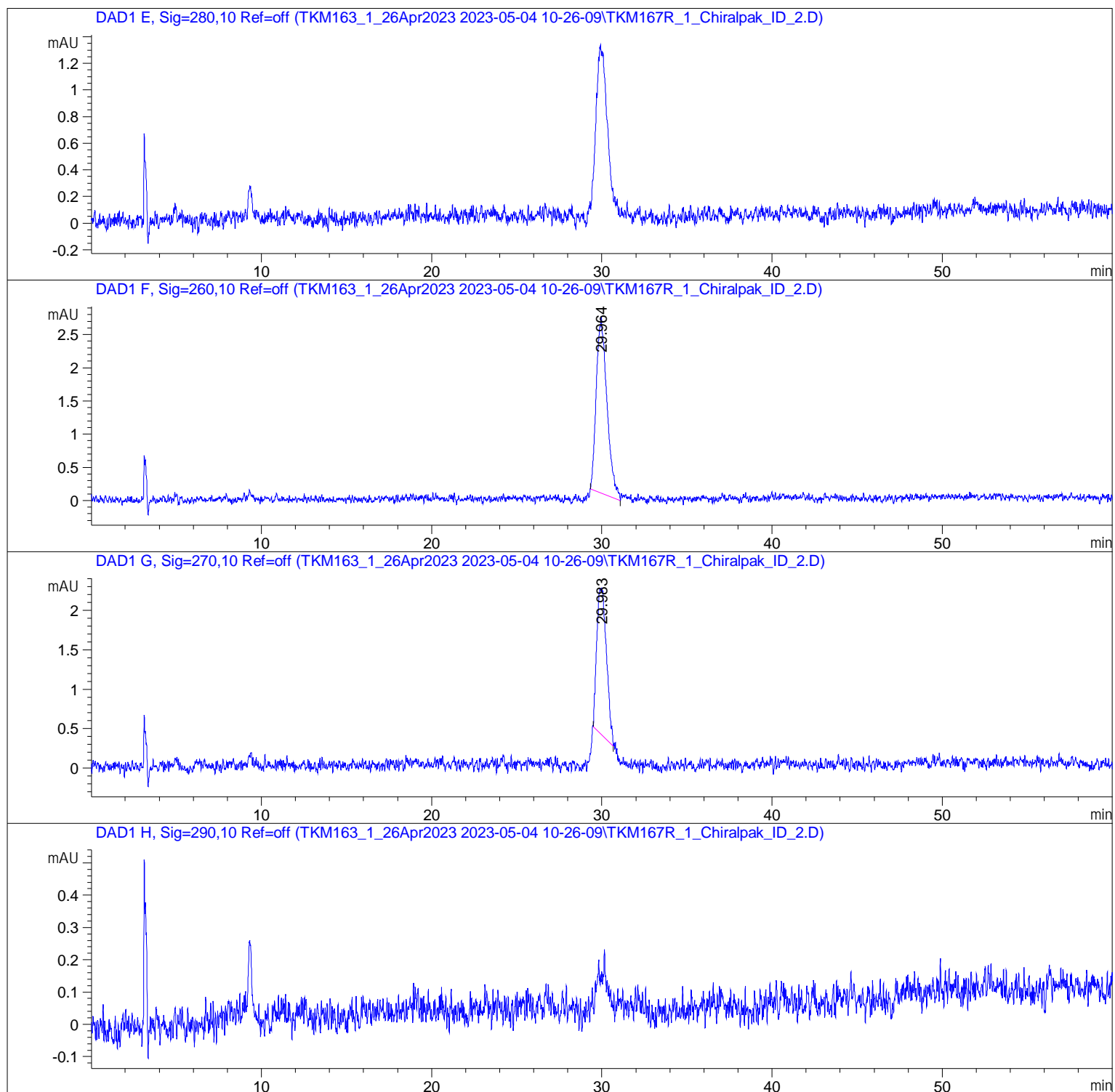


=====

Acq. Operator	: SYSTEM	Seq. Line	: 31
Sample Operator	: SYSTEM		
Acq. Instrument	: 1260 LC	Location	: 19
Injection Date	: 04/05/2023 21:39:38	Inj	: 1
		Inj Volume	: 1.000 µl
Different Inj Volume from Sample Entry! Actual Inj Volume : 5.000 µl			
Method	: C:\Users\Public\Documents\ChemStation\1\Data\TKM163_1_26Apr2023 2023-05-04 10-26-09\ID_10%IPA_90%HEX_60MIN.M (Sequence Method)		
Last changed	: 29/11/2021 09:27:25 by SYSTEM		
Sample Info	: TKM167Rac_1; Analytical; CHIRAPAK-ID; 5 µm, Column Size: 0.46 cm I.D. x 25 cmL; Column No. IA00CE-RA035; Temp: 30 degree Celcius; UV wavelength: 254 nm; Flow Rate: 1 ml/min; Injection: 5 microlitres; Solvent: n-Hexane /Isopropanol = 90:10; Pressure: 42 bar; Sample Conc. 1 mg/ml in 100% IPA		



Sample Name: TKM167R

=====
Area Percent Report
=====

Sorted By : Signal
Multiplier : 1.0000
Dilution : 1.0000
Do not use Multiplier & Dilution Factor with ISTDs

Signal 1: DAD1 A, Sig=250, 10 Ref=360, 100

Peak #	RetTime [min]	Type	Width [min]	Area [mAU*s]	Height [mAU]	Area %
1	29.933	BB	0.5445	383.74051	8.43863	100.0000

Totals : 383.74051 8.43863

Signal 2: DAD1 B, Sig=254, 10 Ref=off

Peak #	RetTime [min]	Type	Width [min]	Area [mAU*s]	Height [mAU]	Area %
1	29.953	BB	0.5274	207.49350	4.78995	100.0000

Totals : 207.49350 4.78995

Signal 3: DAD1 C, Sig=210, 10 Ref=off

Peak #	RetTime [min]	Type	Width [min]	Area [mAU*s]	Height [mAU]	Area %
1	3.189	BB	0.1682	218.22566	20.50474	14.0796
2	3.539	BV	0.1304	63.66642	6.27146	4.1077
3	3.668	VV	0.0777	51.08858	9.07076	3.2962
4	3.736	VV	0.0502	36.00268	10.46068	2.3228
5	3.791	VB	0.1061	77.49674	11.87889	5.0000
6	4.066	BV	0.1068	82.16893	10.55206	5.3014
7	4.182	VV	0.0782	40.30917	7.10827	2.6007
8	4.247	VV	0.0688	25.77789	5.29261	1.6632
9	4.330	VB	0.0557	9.27791	2.47918	0.5986
10	6.635	BV	0.0910	7.33869	1.00685	0.4735
11	8.827	VV	0.0608	5.16136	1.09879	0.3330
12	11.582	VB	0.0915	7.49729	1.09969	0.4837
13	13.977	VB	0.0633	5.67373	1.29059	0.3661
14	14.813	VB	0.0636	6.75749	1.52884	0.4360
15	17.120	VB	0.0806	6.49419	1.10376	0.4190
16	17.596	BV	0.0676	6.90678	1.35240	0.4456
17	17.686	VB	0.0695	5.68480	1.07818	0.3668
18	17.885	VV	0.0705	7.24954	1.31187	0.4677
19	18.923	VB	0.0716	5.92617	1.08669	0.3823
20	20.092	BV	0.0977	9.53601	1.21291	0.6153
21	20.736	BB	0.0603	5.64623	1.36377	0.3643
22	24.412	BB	0.0678	6.67851	1.30369	0.4309
23	29.866	BV	0.1874	270.84790	17.42785	17.4748
24	29.929	VV	0.0725	92.66094	18.48985	5.9784
25	29.997	VB	0.2395	349.30154	17.91204	22.5365
26	32.634	BV	0.1031	9.53893	1.22108	0.6154
27	32.811	VB	0.0770	6.84765	1.15783	0.4418
28	33.792	BB	0.0657	5.20611	1.09070	0.3359
29	39.540	BB	0.0900	6.04587	1.00811	0.3901

Sample Name: TKM167R

Peak #	RetTime [min]	Type	Width [min]	Area [mAU*s]	Height [mAU]	Area %
30	40.218	VV	0.0679	6.98105	1.35994	0.4504
31	40.347	VV	0.0669	5.05727	1.03665	0.3263
32	40.645	VV	0.1219	11.06620	1.11350	0.7140
33	40.868	VV	0.0828	8.15915	1.30739	0.5264
34	43.737	BB	0.0801	6.75606	1.12428	0.4359
35	44.952	BV	0.1110	8.84834	1.00244	0.5709
36	45.332	BV	0.0965	8.61222	1.13547	0.5556
37	45.873	VV	0.0760	6.35859	1.06037	0.4102
38	46.210	BV	0.1120	9.52080	1.11128	0.6143
39	48.407	VV	0.0675	6.82245	1.25260	0.4402
40	48.596	VV	0.0963	8.41113	1.16407	0.5427
41	55.069	VB	0.0801	6.16638	1.08850	0.3978
42	55.208	BV	0.0829	5.93454	1.03443	0.3829
43	55.874	VB	0.0562	5.07632	1.33980	0.3275
44	57.580	VB	0.0913	8.26097	1.12938	0.5330
45	57.794	BV	0.0821	6.89227	1.14708	0.4447

Totals : 1549.93743 176.17125

Signal 4: DAD1 D, Sig=230, 10 Ref=off

Peak #	RetTime [min]	Type	Width [min]	Area [mAU*s]	Height [mAU]	Area %
1	3.191	BB	0.1426	47.70613	4.32921	6.1655
2	29.939	BB	0.5948	726.05530	15.89727	93.8345

Totals : 773.76143 20.22648

Signal 5: DAD1 E, Sig=280, 10 Ref=off

Signal 6: DAD1 F, Sig=260, 10 Ref=off

Peak #	RetTime [min]	Type	Width [min]	Area [mAU*s]	Height [mAU]	Area %
1	29.964	BB	0.5188	115.34010	2.66569	100.0000

Totals : 115.34010 2.66569

Signal 7: DAD1 G, Sig=270, 10 Ref=off

Peak #	RetTime [min]	Type	Width [min]	Area [mAU*s]	Height [mAU]	Area %
1	29.983	BB	0.4657	73.07243	1.86260	100.0000

Totals : 73.07243 1.86260

Signal 8: DAD1 H, Sig=290,10 Ref=off

=====
*** End of Report ***