

Sample Name: TKM163Rac_1

=====

Acq. Operator : SYSTEM Seq. Line : 29

Sample Operator : SYSTEM

Acq. Instrument : 1260 LC Location : 17

Injection Date : 26/04/2023 23:04:57 Inj : 1

Inj Volume : 1.000 µl

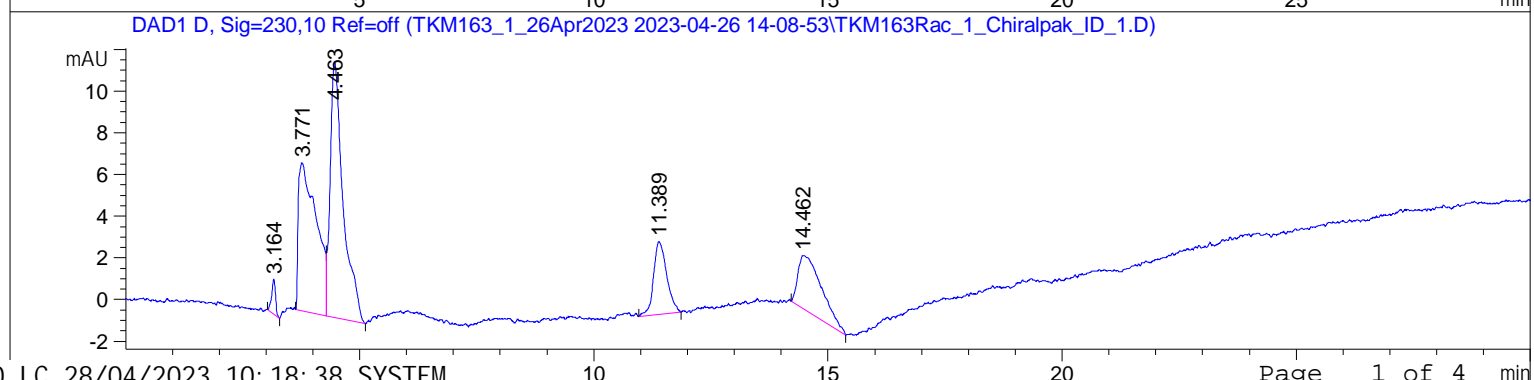
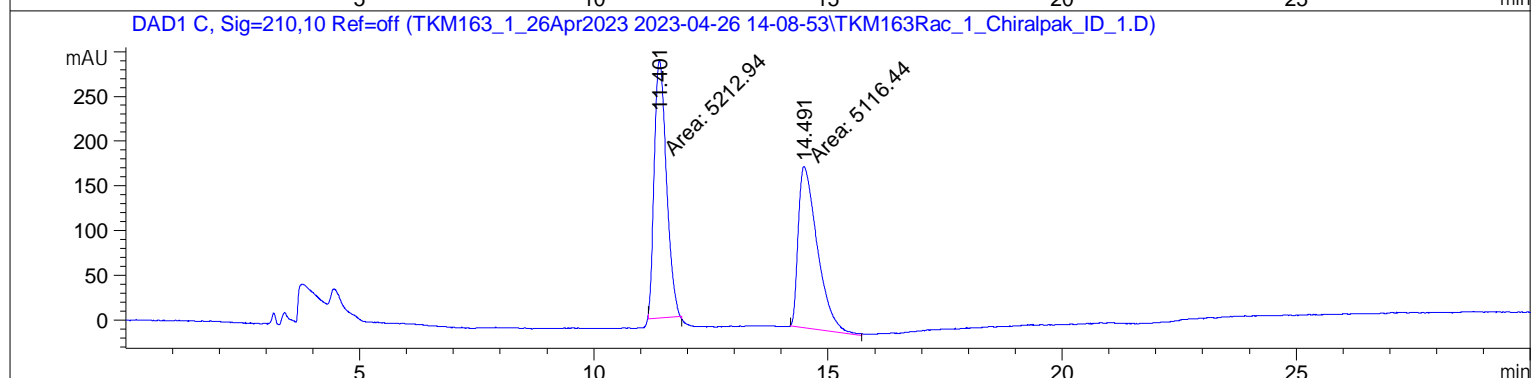
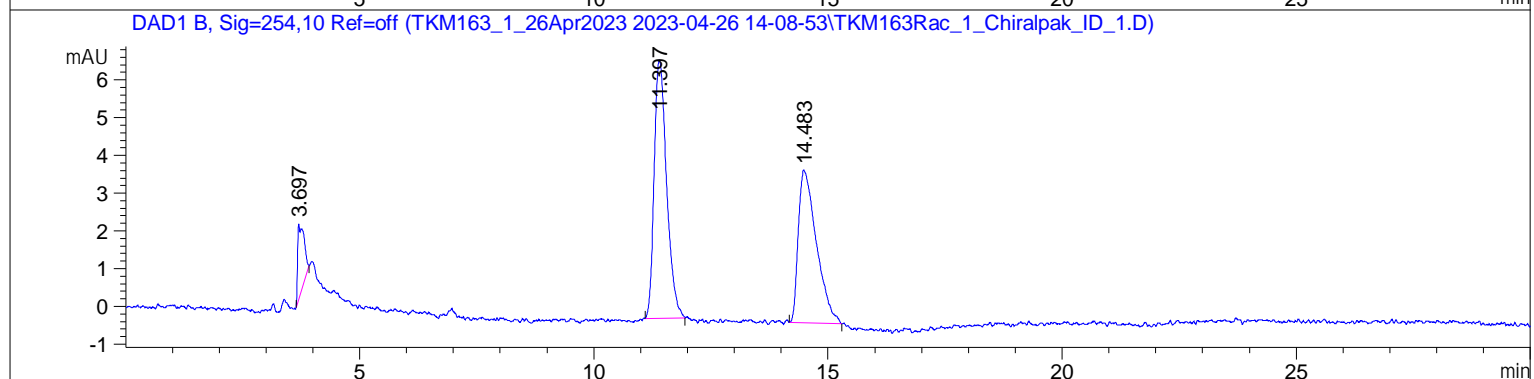
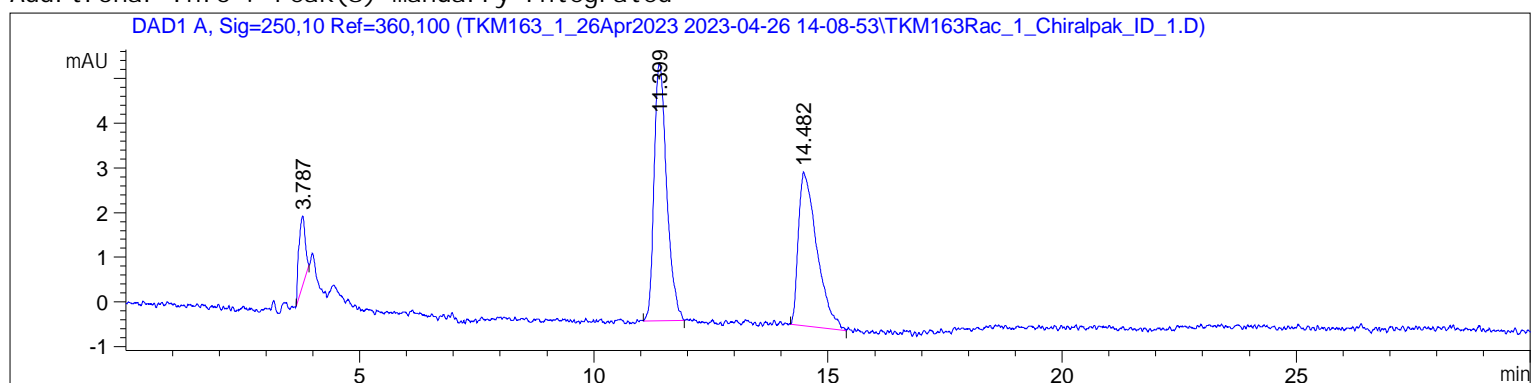
Different Inj Volume from Sample Entry! Actual Inj Volume : 5.000 µl

Method : C:\Users\Public\Documents\ChemStation\1\Data\TKM163_1_26Apr2023 2023-04-26
14-08-53\ID_1%IPA_99%HEX_30MIN.M (Sequence Method)

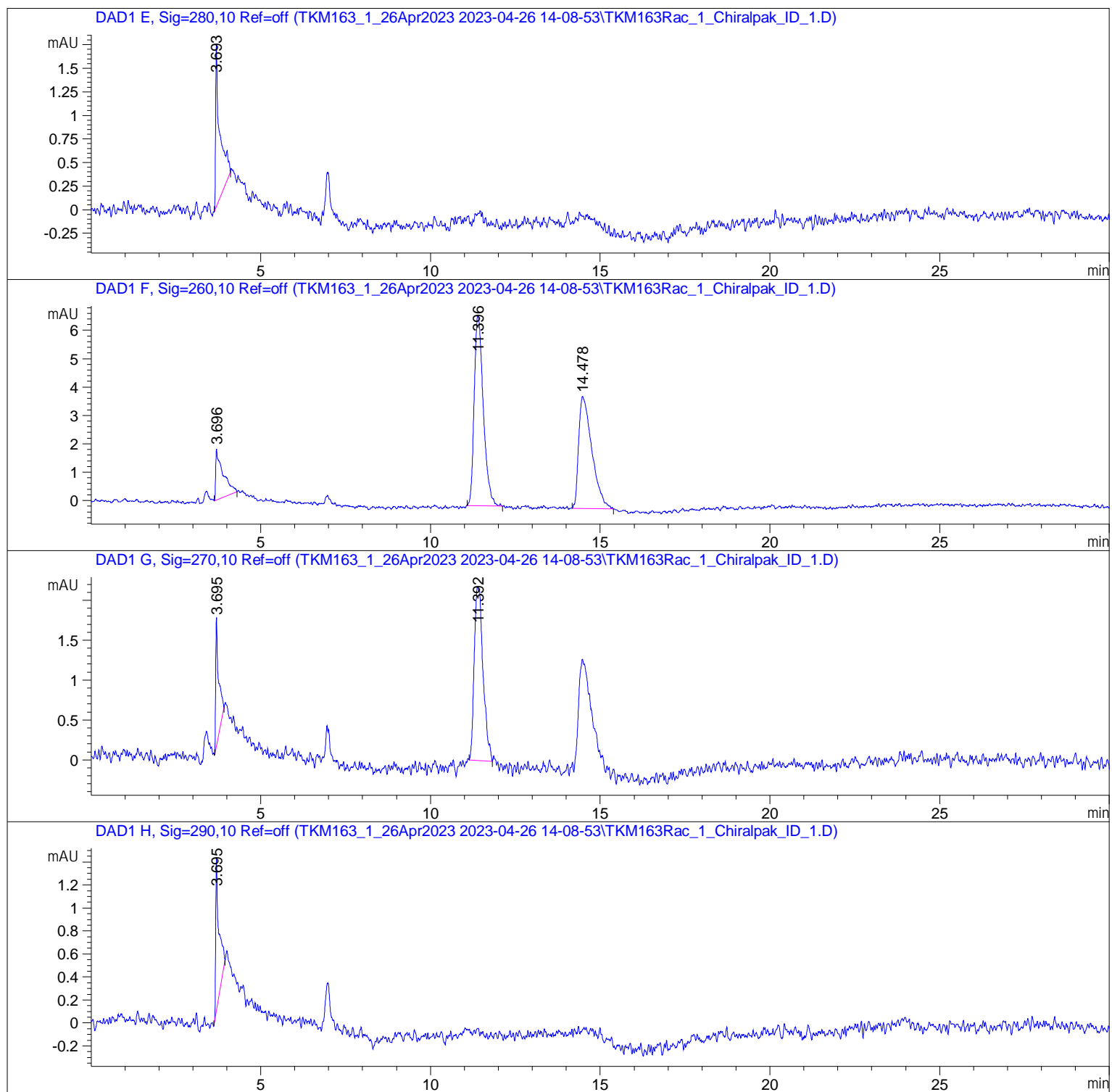
Last changed : 11/03/2022 16:00:54 by SYSTEM

Sample Info : TKM163Rac_1; Analytical; CHIRAPAK-ID; 5 µm, Column Size: 0.46 cm I.D. x 25
cmL; Column No. ID00CE-RA035; Temp: 30 degree Celcius; UV wavelength: 254
nm; Flow Rate: 1 ml/min; Injection: 5 microlitres; Solvent: n-Hexane
/Isopropanol = 99:1; Pressure: 42 bar; Sample Conc. 1 mg/ml in 100% n-
hexanel

Additional Info : Peak(s) manually integrated



Sample Name: TKM163Rac_1

=====
Area Percent Report
=====

Sorted By : Signal
Multiplier : 1.0000
Dilution : 1.0000
Do not use Multiplier & Dilution Factor with ISTDs

Signal 1: DAD1 A, Sig=250, 10 Ref=360, 100

Peak #	RetTime [min]	Type	Width [min]	Area [mAU*s]	Height [mAU]	Area %
1	3.787	BB	0.1326	15.15284	1.54278	7.0000
2	11.399	BB	0.2715	107.39610	5.76040	49.6127
3	14.482	BB	0.3614	93.91997	3.43053	43.3873

Totals : 216.46891 10.73372

Signal 2: DAD1 B, Sig=254, 10 Ref=off

Peak #	RetTime [min]	Type	Width [min]	Area [mAU*s]	Height [mAU]	Area %
1	3.697	BB	0.1141	17.66758	2.01818	6.9955
2	11.397	BB	0.2752	126.24998	6.84558	49.9888
3	14.483	BB	0.3628	108.63895	4.05167	43.0157

Totals : 252.55652 12.91542

Signal 3: DAD1 C, Sig=210, 10 Ref=off

Peak #	RetTime [min]	Type	Width [min]	Area [mAU*s]	Height [mAU]	Area %
1	11.401	MM	0.3020	5212.94092	287.68652	50.4671
2	14.491	MM	0.4733	5116.43994	180.17361	49.5329

Totals : 1.03294e4 467.86014

Signal 4: DAD1 D, Sig=230, 10 Ref=off

Peak #	RetTime [min]	Type	Width [min]	Area [mAU*s]	Height [mAU]	Area %
1	3.164	BB	0.0882	9.51681	1.67801	1.5856
2	3.771	BV	0.3478	191.87775	7.08880	31.9683
3	4.463	VB	0.2852	236.82594	12.26974	39.4570
4	11.389	BB	0.2692	67.81353	3.48206	11.2982
5	14.462	BB	0.4473	94.17915	2.54761	15.6910

Totals : 600.21318 27.06622

Signal 5: DAD1 E, Sig=280, 10 Ref=off

Peak #	RetTime [min]	Type	Width [min]	Area [mAU*s]	Height [mAU]	Area %
1	3.693	BB	0.1162	15.13329	1.72690	100.0000

Totals : 15.13329 1.72690

Signal 6: DAD1 F, Sig=260, 10 Ref=off

Peak #	RetTime [min]	Type	Width [min]	Area [mAU*s]	Height [mAU]	Area %
1	3.696	BB	0.1884	27.21645	1.79971	10.5353
2	11.396	BB	0.2710	124.53747	6.69539	48.2076
3	14.478	BB	0.3549	106.58179	3.94871	41.2571

Totals : 258.33570 12.44382

Signal 7: DAD1 G, Sig=270, 10 Ref=off

Peak #	RetTime [min]	Type	Width [min]	Area [mAU*s]	Height [mAU]	Area %
1	3.695	BB	0.0838	9.62102	1.60909	19.7889
2	11.392	BB	0.2228	38.99727	2.17854	80.2111

Totals : 48.61829 3.78763

Signal 8: DAD1 H, Sig=290, 10 Ref=off

Peak #	RetTime [min]	Type	Width [min]	Area [mAU*s]	Height [mAU]	Area %
1	3.695	BB	0.0893	8.83083	1.33272	100.0000

Totals : 8.83083 1.33272

*** End of Report ***