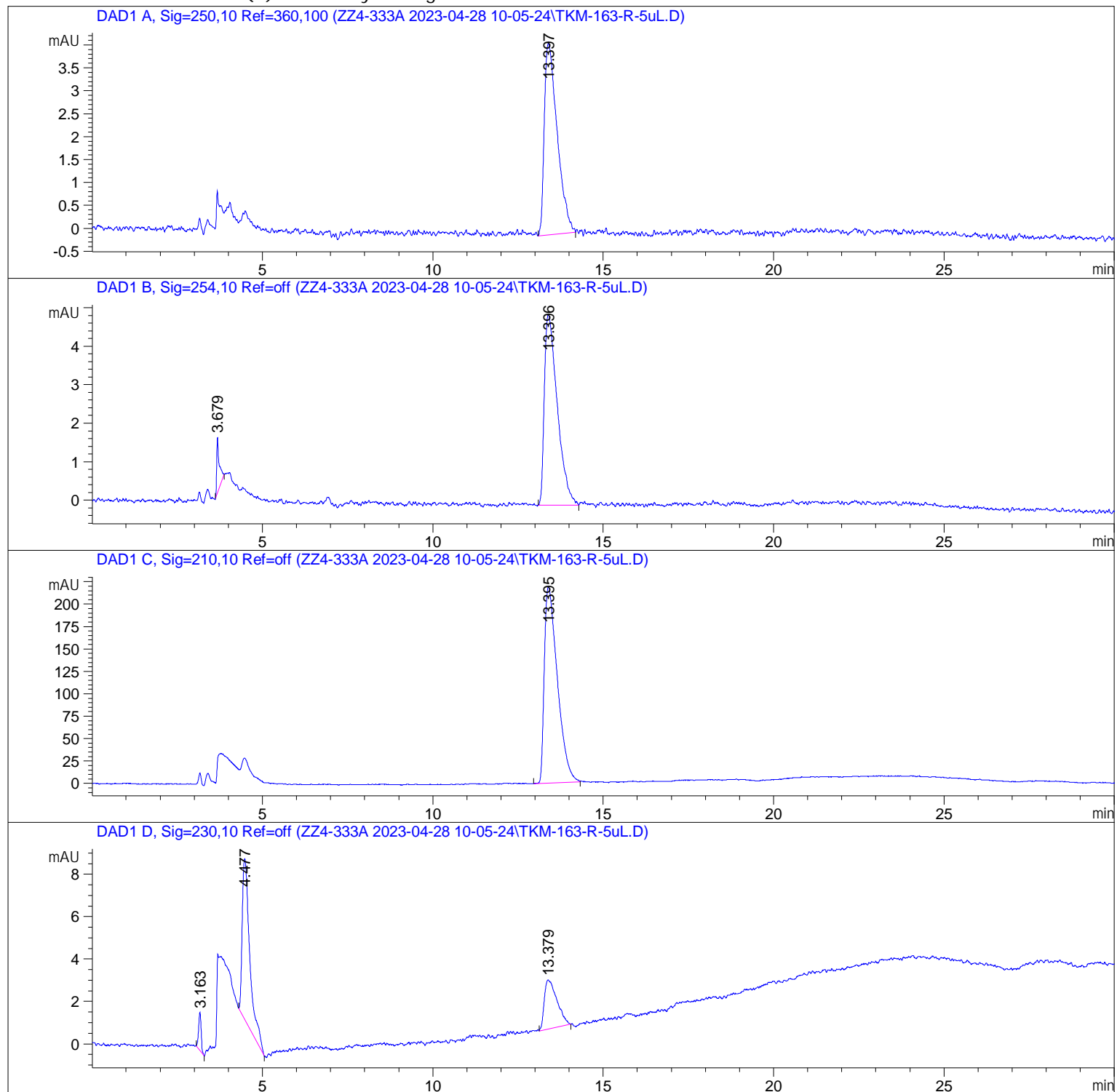


Sample Name: TKM-163-R

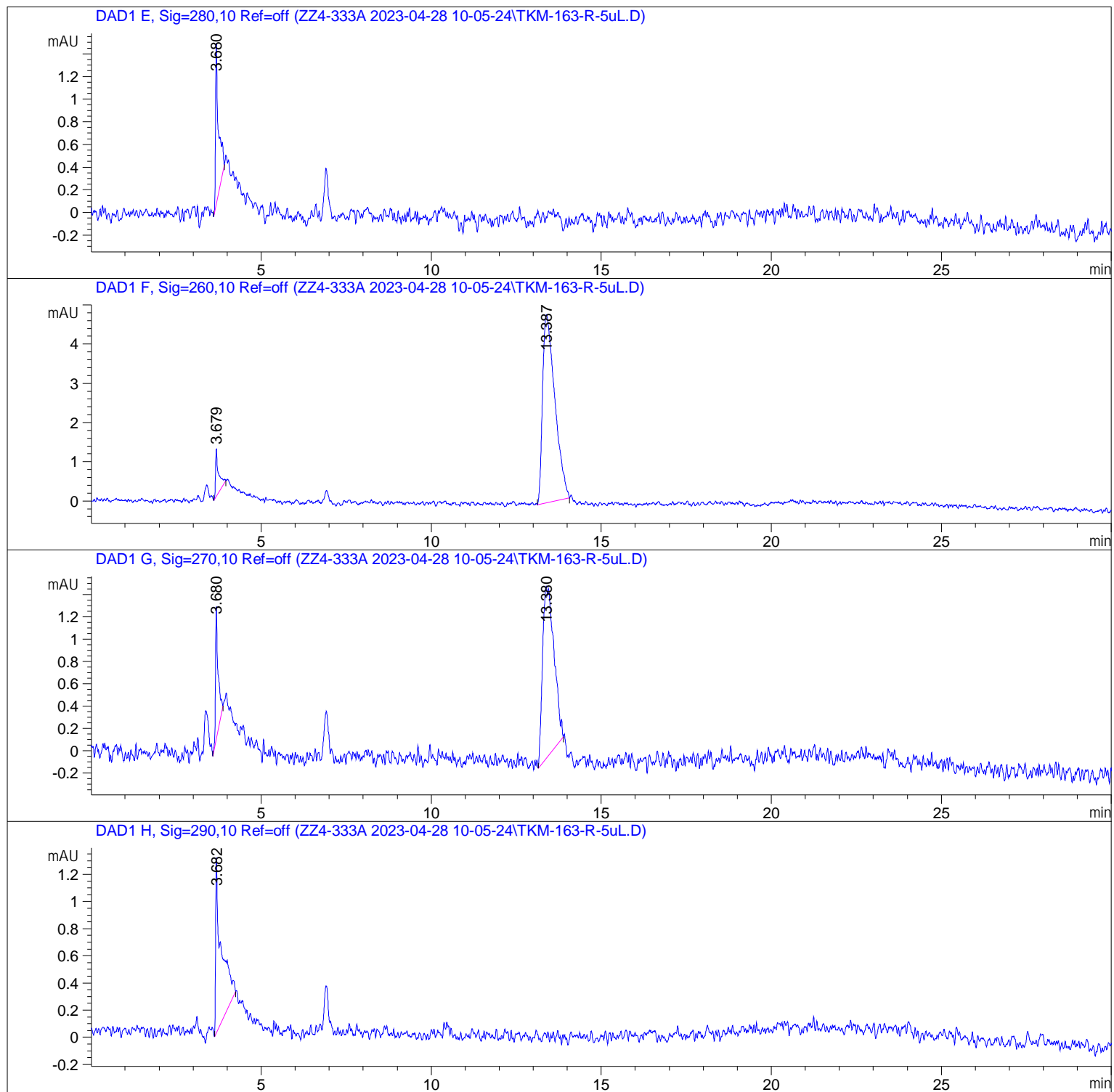
=====

Acq. Operator	: SYSTEM	Seq. Line	: 7
Sample Operator	: SYSTEM		
Acq. Instrument	: 1260 LC	Location	: 18
Injection Date	: 28/04/2023 12:44:18	Inj	: 1
		Inj Volume	: 1.000 µl
Different Inj Volume from Sample Entry! Actual Inj Volume : 5.000 µl			
Method	: C:\Users\Public\Documents\ChemStation\1\Data\ZZ4-333A 2023-04-28 10-05-24		
	\ID_1\PA_99%HEX_30MIN.M (Sequence Method)		
Last changed	: 11/03/2022 16:00:54 by SYSTEM		
Sample Info	: TKM-163-R-5uL		

Additional Info : Peak(s) manually integrated



Sample Name: TKM-163-R

=====  
Area Percent Report  
=====

Sorted By : Signal  
Multiplier : 1.0000  
Dilution : 1.0000  
Do not use Multiplier & Dilution Factor with ISTDs

Signal 1: DAD1 A, Sig=250, 10 Ref=360, 100

Peak #	RetTime [min]	Type	Width [min]	Area [mAU*s]	Height [mAU]	Area %
1	13.397	BB	0.3152	109.66282	4.19203	100.0000

Totals : 109.66282 4.19203

Signal 2: DAD1 B, Sig=254, 10 Ref=off

Peak #	RetTime [min]	Type	Width [min]	Area [mAU*s]	Height [mAU]	Area %
1	3.679	BB	0.0736	7.69339	1.45661	5.5597
2	13.396	BB	0.3197	130.68512	4.95474	94.4403

Totals : 138.37851 6.41135

Signal 3: DAD1 C, Sig=210, 10 Ref=off

Peak #	RetTime [min]	Type	Width [min]	Area [mAU*s]	Height [mAU]	Area %
1	13.395	BV	0.3817	5816.74658	219.12120	100.0000

Totals : 5816.74658 219.12120

Signal 4: DAD1 D, Sig=230, 10 Ref=off

Peak #	RetTime [min]	Type	Width [min]	Area [mAU*s]	Height [mAU]	Area %
1	3.163	BB	0.0807	9.31492	1.79174	5.0440
2	4.477	BB	0.2245	115.99398	7.58308	62.8098
3	13.379	BB	0.3045	59.36600	2.32043	32.1462

Totals : 184.67490 11.69525

Signal 5: DAD1 E, Sig=280, 10 Ref=off

Peak #	RetTime [min]	Type	Width [min]	Area [mAU*s]	Height [mAU]	Area %
1	3.680	BB	0.0816	8.49473	1.42356	100.0000

Totals : 8.49473 1.42356

Signal 6: DAD1 F, Sig=260, 10 Ref=off

Peak #	RetTime [min]	Type	Width [min]	Area [mAU*s]	Height [mAU]	Area %
1	3.679	BB	0.0844	7.57122	1.22046	5.9369
2	13.387	BB	0.3517	119.95773	4.79779	94.0631

Totals : 127.52895 6.01825

Signal 7: DAD1 G, Sig=270, 10 Ref=off

Peak #	RetTime [min]	Type	Width [min]	Area [mAU*s]	Height [mAU]	Area %
1	3.680	BB	0.0731	6.23841	1.19180	14.9586
2	13.380	BB	0.2822	35.46619	1.54287	85.0414

Totals : 41.70461 2.73467

Signal 8: DAD1 H, Sig=290, 10 Ref=off

Peak #	RetTime [min]	Type	Width [min]	Area [mAU*s]	Height [mAU]	Area %
1	3.682	BB	0.1508	15.13062	1.29072	100.0000

Totals : 15.13062 1.29072

\*\*\* End of Report \*\*\*